

# Recombinant Rat Serpin E1/PAI-1 Protein

Catalog No.: RP02838 **Recombinant**

## Sequence Information

Species	Gene ID	Swiss Prot
Rat	24617	P20961

### Tags

C-His

### Synonyms

PAI;PAI-1;PAI1;PLANH1;SERPINE1;Serpin E1

## Product Information

Source	Purification
HEK293 Cells	> 95% by SDS-PAGE.

**Calculated MW** **Observed MW**

### Endotoxin

&lt;1EU/μg

### Formulation

Lyophilized from a 0.22 μm filtered solution of PBS, pH 7.4.

### Reconstitution

Centrifuge the vial before opening. Reconstitute to a concentration of 0.1-0.5 mg/mL in sterile distilled water. Avoid vortex or vigorously pipetting the protein. For long term storage, it is recommended to add a carrier protein or stabilizer (e.g. 0.1% BSA, 5% HSA, 10% FBS or 5% Trehalose), and aliquot the reconstituted protein solution to minimize free-thaw cycles.

## Contact

 | 400-999-6126 | [cn.market@abclonal.com.cn](mailto:cn.market@abclonal.com.cn) | [www.abclonal.com.cn](http://www.abclonal.com.cn)

## Background

Serpins are a group of proteins with similar structures that were first identified as a set of proteins able to inhibit proteases. They are the largest and most diverse family of serine protease inhibitors which are involved in a number of fundamental biological processes such as blood coagulation, complement activation, fibrinolysis, angiogenesis, inflammation and tumor suppression and are expressed in a cell-specific manner. Serpin E1 is a secreted protein which belongs to the Serpin family. Serpin E1 acts as 'bait' for tissue plasminogen activator, urokinase, and protein C. Its rapid interaction with TPA may function as a major control point in the regulation of fibrinolysis. Defects in SERPINE1 are characterized by abnormal bleeding due to Serpin E1 defect in the plasma. High concentrations of Serpin E1 have been associated with thrombophilia which is an autosomal dominant disorder in which affected individuals are prone to develop serious spontaneous thrombosis.

## Basic Information

### Description

Recombinant Rat Serpin E1/PAI-1 Protein is produced by HEK293 Cells expression system. The target protein is expressed with sequence (Ser24-Pro402) of Rat Serpin F1/PEDF (Accession #NP\_036752.1) fused with a 6×His tag at the C-terminus.

### Bio-Activity

### Storage

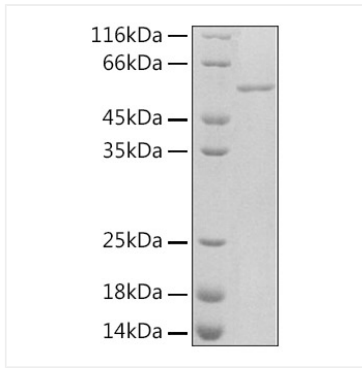
Store at -20°C. Store the lyophilized protein at -20°C to -80 °C up to 1 year from the date of receipt.

After reconstitution, the protein solution is stable at -20°C for 3 months, at 2-8°C for up to 1 week.

Avoid repeated freeze/thaw cycles.

## Validation Data

---



Recombinant Rat Serpin E1/PAI-1 Protein was determined by SDS-PAGE with Coomassie Blue, showing a band at 49 kDa.