

# Recombinant Mouse SELL/L-selectin/LAM-1/CD62L Protein

Catalog No.: RP02841 **Recombinant**

## Sequence Information

Species	Gene ID	Swiss Prot
Mouse	20343	P18337

### Tags

C-His

### Synonyms

L-selectin; LAM-1; LNHR; LYAM1; SELL; CD62L; LEU8; LSEL; PLNHR; TQ1

## Product Information

Source	Purification
HEK293 cells	> 95% as determined by HPLC.

### Endotoxin

<1EU/μg

### Formulation

Lyophilized from a 0.22 μm filtered solution of PBS, pH 7.4.

### Reconstitution

Centrifuge the tube before opening. Reconstitute to a concentration of 0.1-0.5 mg/mL in sterile distilled water. Avoid vortex or vigorously pipetting the protein. For long term storage, it is recommended to add a carrier protein or stabilizer (e.g. 0.1% BSA, 5% HSA, 10% FBS or 5% Trehalose), and aliquot the reconstituted protein solution to minimize free-thaw cycles.

## Contact

 | 400-999-6126

 | [cn.market@abclonal.com.cn](mailto:cn.market@abclonal.com.cn)

 | [www.abclonal.com.cn](http://www.abclonal.com.cn)

## Background

L-selectin (CD62L) is a type-I transmembrane glycoprotein and cell adhesion molecule that is expressed on most circulating leukocytes. Since its identification in 1983, L-selectin has been extensively characterized as a tethering/rolling receptor. There is now mounting evidence in the literature to suggest that L-selectin plays a role in regulating monocyte protrusion during transendothelial migration (TEM).

## Basic Information

### Description

Recombinant Mouse SELL/L-selectin/LAM-1/CD62L Protein is produced by HEK293 cells expression system. The target protein is expressed with sequence (Trp39-Asn332) of mouse SELL/L-selectin/LAM-1/CD62L (Accession #NP\_035476.1) fused with a 6xHis tag at the C-terminus.

### Bio-Activity

### Storage

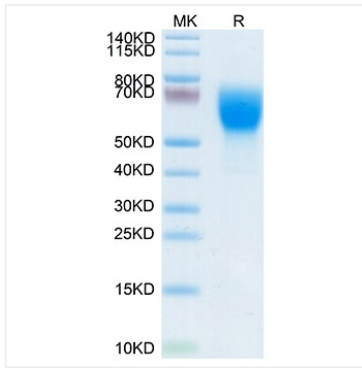
Store the lyophilized protein at -20°C to -80°C for 12 months.

After reconstitution, the protein solution is stable at -20°C for 3 months, at 2-8°C for up to 1 week.

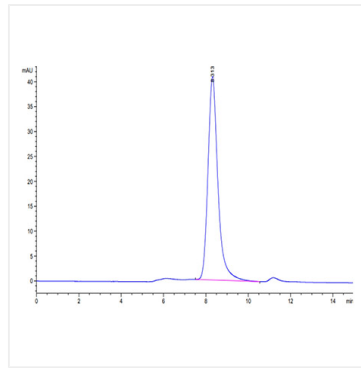
Avoid repeated freeze/thaw cycles.

## Validation Data

---



Recombinant Mouse SELL/L-selectin/LAM-1/CD62L Protein was determined by SDS-PAGE with Coomassie Blue, showing a band at 55-70 kDa.



The purity of Mouse CD62L is greater than 95% as determined by SEC-HPLC.