

# Recombinant Human Intrinsic factor/CBLIF Protein

Catalog No.: RP02842 **Recombinant**

## Sequence Information

<b>Species</b>	<b>Gene ID</b>	<b>Swiss Prot</b>
Human	2694	P27352-1

### Tags

C-His

### Synonyms

Cobalamin binding intrinsic factor; IF;  
GIF; INF; IFMH; TCN3;CBLIF

## Product Information

<b>Source</b>	<b>Purification</b>
HEK293 Cells	> 95% by SDS-PAGE.

<b>Calculated MW</b>	<b>Observed MW</b>
44.25 kDa	45-60 kDa

### Endotoxin

&lt;0.01EU/μg

### Formulation

Lyophilized from a 0.22 μm filtered solution of PBS, pH 7.4.

### Reconstitution

Centrifuge the vial before opening.  
Reconstitute to a concentration of 0.1-0.5 mg/mL in sterile distilled water. Avoid vortex or vigorously pipetting the protein. For long term storage, it is recommended to add a carrier protein or stabilizer (e.g. 0.1% BSA, 5% HSA, 10% FBS or 5% Trehalose), and aliquot the reconstituted protein solution to minimize free-thaw cycles.

## Contact

 | 400-999-6126 | [cn.market@abclonal.com.cn](mailto:cn.market@abclonal.com.cn) | [www.abclonal.com.cn](http://www.abclonal.com.cn)

## Background

Gastric intrinsic factor, also known as GIF, belongs to the of the cobalamin transport protein family. It is a glycoprotein produced by the parietal cells of the stomach. Gastric intrinsic factor plays a key role in the absorption of vitamin B12 on in the small intestine. Vitamin B12 binds to haptocorrin after entry into the stomach. The resulting complex enters the duodenum, where pancreatic enzymes digest haptocorrin. In the less acidic environment of the small intestine, B12 can then bind to gastric intrinsic factor. This new complex travels to the ileum, where special epithelial cells endocytose them. Inside the cell, B12 dissociates once again and binds to another protein, transcobalamin II. The new complex can exit the epithelial cells to enter the liver.

## Basic Information

### Description

Recombinant Human Intrinsic factor/CBLIF Protein is produced by HEK293 Cells expression system. The target protein is expressed with sequence (Ser19-Tyr417) of human Intrinsic factor/CBLIF (Accession #NP\_005133.2) fused with a 6×His tag at the C-terminus.

### Bio-Activity

### Storage

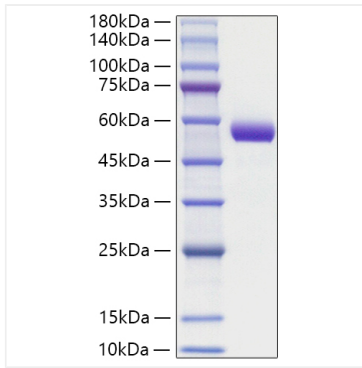
Store at -20°C. Store the lyophilized protein at -20°C to -80 °C up to 1 year from the date of receipt.

After reconstitution, the protein solution is stable at -20°C for 3 months, at 2-8°C for up to 1 week.

Avoid repeated freeze/thaw cycles.

## Validation Data

---



Recombinant Human Intrinsic factor/CBLIF Protein was determined by SDS-PAGE with Coomassie Blue, showing a band at 45-60 kDa.