

Recombinant Human REG3A Protein

Catalog No.: RP02843 **Recombinant**

Sequence Information

Species	Gene ID	Swiss Prot
Human	5068	Q06141

Tags

C-6His

Synonyms

HIP; PAP; PAP1; REG3; INGAP; PAP-H;
PBCGF; HIP/PAP; REG-III;REG3A

Product Information

Source	Purification
HEK293 Cells	> 97% by SDS-PAGE.

Endotoxin

<1EU/μg

Formulation

Lyophilized from a 0.22 μm filtered solution of PBS, pH 7.4.

Reconstitution

Centrifuge the vial before opening. Reconstitute to a concentration of 0.1-0.5 mg/mL in sterile distilled water. Avoid vortex or vigorously pipetting the protein. For long term storage, it is recommended to add a carrier protein or stabilizer (e.g. 0.1% BSA, 5% HSA, 10% FBS or 5% Trehalose), and aliquot the reconstituted protein solution to minimize freeze-thaw cycles.

Contact

 | 400-999-6126 | cn.market@abclonal.com.cn | www.abclonal.com.cn

Background

Regenerating islet-derived protein 3-alpha, also known as Regenerating islet-derived protein III-alpha, REG-3-alpha, REG3A, and HIP, is secreted protein that contains one C-type lectin domain. REG3A is constitutively expressed in intestine, and is a pancreatic secretory protein that may be involved in cell proliferation or differentiation. It is overexpressed during the acute phase of pancreatitis and in some patients with chronic pancreatitis. REG3A and REG1A proteins are both involved in liver and pancreatic regeneration and proliferation. REG3A is also a stress protein involved in the control of bacterial proliferation. REG3A is down-regulated in most primary human gastric cancer cells, and might be useful in the diagnosis of gastric cancer. Additionally, REG3A is a target of beta-catenin signaling in Huh7 hepatoma cells. The REG1A and REG3A are downstream targets of the Wnt pathway during liver tumorigenesis.

Basic Information

Description

Recombinant Human REG3A Protein is produced by HEK293 Cells expression system. The target protein is expressed with sequence (Glu27-Asp175) of human REG3A (Accession #NP_002571.1) fused with a 6xHis tag at the C-terminus.

Bio-Activity

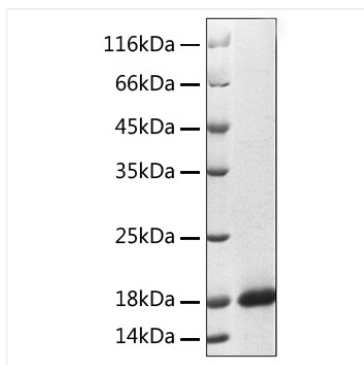
Storage

Store the lyophilized protein at -20°C to -80°C for 12 months.

After reconstitution, the protein solution is stable at -20°C for 3 months, at 2-8°C for up to 1 week.

Avoid repeated freeze/thaw cycles.

Validation Data



Recombinant Human REG3A Protein was determined by SDS-PAGE with Coomassie Blue, showing a band at 18 kDa.