

# Recombinant Human Complement C3 Protein

Catalog No.: RP02855 **Recombinant**

## Sequence Information

Species	Gene ID	Swiss Prot
Human	718	P01024

### Tags

C-His

### Synonyms

C3;AHUS5;ARMD9;ASP;C3a;C3b;CPAMD1;HEL-S-62p;complement C3;C3 / C3a

## Product Information

Source	Purification
HEK293 cells	> 95% as determined by HPLC

### Endotoxin

<1EU/μg

### Formulation

Lyophilized from a 0.22 μm filtered solution of PBS, pH 7.4.

### Reconstitution

Centrifuge the tube before opening. Reconstitute to a concentration of 0.1-0.5 mg/mL in sterile distilled water. Avoid vortex or vigorously pipetting the protein. For long term storage, it is recommended to add a carrier protein or stabilizer (e.g. 0.1% BSA, 5% HSA, 10% FBS or 5% Trehalose), and aliquot the reconstituted protein solution to minimize free-thaw cycles.

## Contact

☎ | 400-999-6126

✉ | [cn.market@abclonal.com.cn](mailto:cn.market@abclonal.com.cn)

🌐 | [www.abclonal.com.cn](http://www.abclonal.com.cn)

## Background

C3 is the major complement component serum. It is mainly synthesized by macrophages and liver. C3 plays a central role in the activation of the complement system. Its processing by C3 convertase is the central reaction in both classical and alternative complement pathways. It is cleaved into two fragments, C3a and C3b. C3a anaphylatoxin is a mediator of local inflammatory process. In chronic inflammation, acts as a chemoattractant for neutrophils. After activation C3b can bind covalently, via its reactive thioester, to cell surface carbohydrates or immune aggregates. It induces the contraction of smooth muscle, increases vascular permeability and causes histamine release from mast cells and basophilic leukocytes.

## Basic Information

### Description

Recombinant Human Complement C3 Protein is produced by HEK293 cells expression system. The target protein is expressed with sequence (Ser23-Asn1663) of human Complement C3 (Accession #NP\_000055.2) fused with a 6×His tag at the C-terminus.

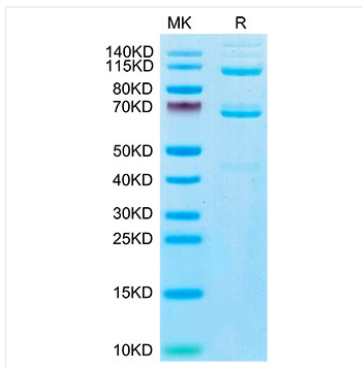
### Bio-Activity

### Storage

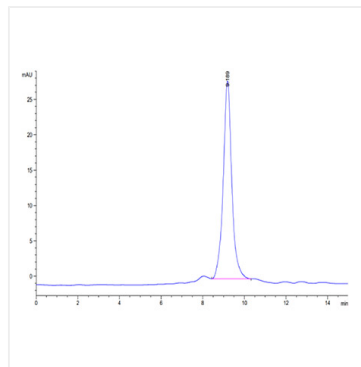
Store the lyophilized protein at -20°C to -80°C for 12 months. After reconstitution, the protein solution is stable at -20°C for 3 months, at 2-8°C for up to 1 week. Avoid repeated freeze/thaw cycles.

## Validation Data

---



Recombinant Human Complement C3 Protein was determined by SDS-PAGE with Coomassie Blue, showing a band at 110-115 kDa and 140-160 kDa.



The purity of Mouse CD62L is greater than 95% as determined by SEC-HPLC.