

Recombinant Mouse LRG1 Protein

Catalog No.: RP02863 **Recombinant**

Sequence Information

Species	Gene ID	Swiss Prot
Mouse	76905	Q91XL1

Tags

C-His

Synonyms

LRG1;HMFT1766;LRG

Product Information

Source	Purification
HEK293 cells	> 95% as determined by HPLC

Calculated MW	Observed MW
34.72 kDa	45-60 kDa

Endotoxin

<0.1EU/μg

Formulation

Lyophilized from 0.22μm filtered solution in PBS (pH 7.4). Normally 8% trehalose is added as protectant before lyophilization.

Reconstitution

Centrifuge the tube before opening. Reconstitute to a concentration of 0.1-0.5 mg/mL in sterile distilled water. Avoid vortex or vigorously pipetting the protein. For long term storage, it is recommended to add a carrier protein or stabilizer (e.g. 0.1% BSA, 5% HSA, 10% FBS or 5% Trehalose), and aliquot the reconstituted protein solution to minimize free-thaw cycles.

Contact

☎ | 400-999-6126

✉ | cn.market@abclonal.com.cn

🌐 | www.abclonal.com.cn

Background

Diabetic nephropathy (DN) is an important public health concern of increasing proportions and the leading cause of end-stage renal disease (ESRD) in diabetic patients. It is one of the most common long-term microvascular complications of diabetes mellitus that is characterized by proteinuria and glomerular structural changes. LRG1 is a novel pro-angiogenic factors involved in the abnormal angiogenesis and renal fibrosis in DN.

Basic Information

Description

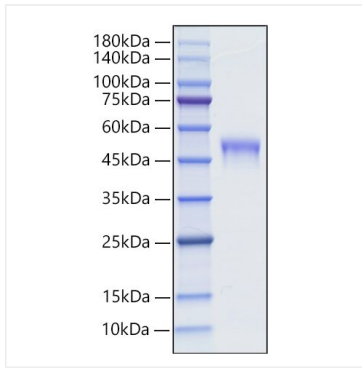
Recombinant Mouse LRG1 Protein is produced by HEK293 cells expression system. The target protein is expressed with sequence (Leu33-Leu342) of mouse LRG1 (Accession #NP_084072.1) fused with a 6×His tag at the C-terminus.

Bio-Activity

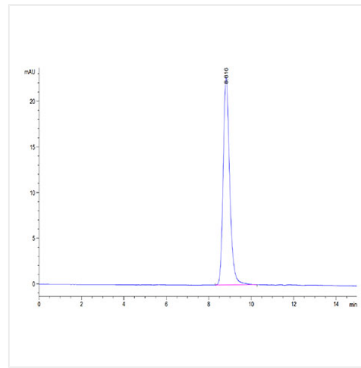
Storage

Store at -20°C. Store the lyophilized protein at -20°C to -80 °C up to 1 year from the date of receipt. After reconstitution, the protein solution is stable at -20°C for 3 months, at 2-8°C for up to 1 week. Avoid repeated freeze/thaw cycles.

Validation Data



Recombinant Mouse LRG1 Protein was determined by SDS-PAGE with Coomassie Blue, showing a band at 45-60kDa.



The purity of Mouse LRG1 is greater than 95% as determined by SEC-HPLC.