

# Recombinant Human Plasma Kallikrein/KLKB1 Protein

Catalog No.: RP02872 **Recombinant**

## Sequence Information

Species	Gene ID	Swiss Prot
Human	3818	P03952

### Tags

C-His

### Synonyms

KLKB1;KLK3;PKK;PKKD;PPK

## Product Information

Source	Purification
HEK293 cells	> 95% as determined by SEC-HPLC.

Calculated MW	Observed MW
70.3 kDa	72-80 kDa

### Endotoxin

<1EU/μg

### Formulation

Lyophilized from a 0.22 μm filtered solution of 20mM NaAc,150mM NaCl,pH5.0.

### Reconstitution

Centrifuge the vial before opening. Reconstitute to a concentration of 0.1-0.5 mg/mL in 20mM NaAc,150mM NaCl,pH5.0.. Avoid vortex or vigorously pipetting the protein. For long term storage, it is recommended to add a carrier protein or stabilizer (e.g. 0.1% BSA, 5% HSA, 10% FBS or 5% Trehalose), and aliquot the reconstituted protein solution to minimize free-thaw cycles.

## Contact

☎ | 400-999-6126

✉ | [cn.market@abclonal.com.cn](mailto:cn.market@abclonal.com.cn)

🌐 | [www.abclonal.com.cn](http://www.abclonal.com.cn)

## Background

Plasma kallikrein, also known as Fletcher factor or kallikrein B1 (KLKB1), is a serine endopeptidase, like its homologs tissue kallikrein and kallikrein-related peptidases (KLKs). Its physiological role is to catalyze the release of kinins and other vasoactive peptides.

## Basic Information

### Description

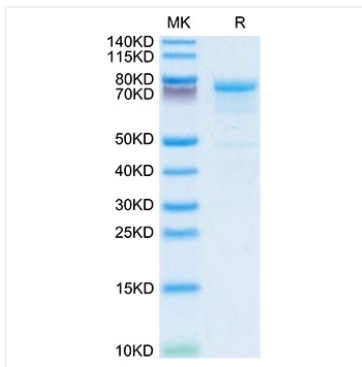
Recombinant Human Plasma Kallikrein/KLKB1 Protein is produced by HEK293 cells expression system. The target protein is expressed with sequence (Gly20-Ala638) of human Plasma Kallikrein/KLKB1 (Accession #NP\_000883.2) fused with 6×His tag at the C-terminus.

### Bio-Activity

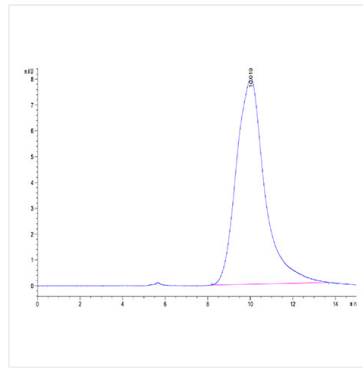
#### Storage

Store at -20°C. Store the lyophilized protein at -20°C to -80 °C up to 1 year from the date of receipt. After reconstitution, the protein solution is stable at -20°C for 3 months, at 2-8°C for up to 1 week. Avoid repeated freeze/thaw cycles.

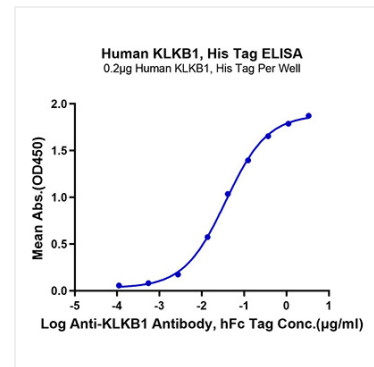
## Validation Data



Recombinant Human Plasma Kallikrein/KLKB1 Protein was determined by SDS-PAGE with Coomassie Blue, showing a band at 72-80kDa.



The purity of Human Plasma Kallikrein/KLKB1 Protein (Cat.RP02872LQ) was greater than 95% as determined by SEC-HPLC.



Immobilized Human KLKB1, His Tag at 2µg/ml (100µl/well) on the plate. Dose response curve for Anti-KLKB1 Antibody, hFc Tag with the EC50 of 36.7ng/ml determined by ELISA.