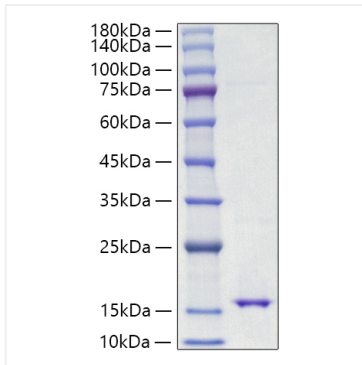
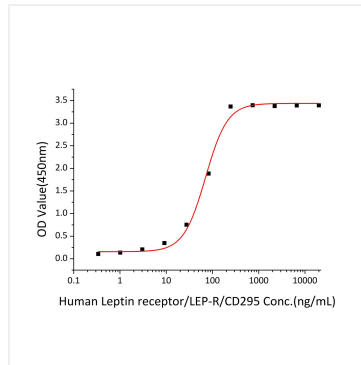


Validation Data



Recombinant Mouse Leptin/LEP Protein was determined by SDS-PAGE under reducing conditions with Coomassie Blue.



Immobilized mouse Leptin/LEP (Catalog: RP02880) at 0.5 μ g/mL (100 μ L/well) can bind human LEP-R/CD295 (Catalog: RP01248) with a linear range of 0.34-70.6 ng/mL.