

Recombinant Human Calumenin/CALU Protein

Catalog No.: RP02945 **Recombinant**

Sequence Information

Species	Gene ID	Swiss Prot
Human	813	O43852

Tags

C-His

Synonyms

CALU; calumenin; Calumenin; calumenin

Product Information

Source	Purification
HEK293 cells	> 80% by SDS-PAGE.

Endotoxin

< 0.1 EU/μg of the protein by LAL method.

Formulation

Lyophilized from a 0.2 μm filtered solution of 20mM PB, 150mM NaCl, pH 7.4.

Reconstitution

Centrifuge the tube before opening. Reconstitute to a concentration of 0.1-0.5 mg/mL in sterile distilled water. Avoid vortex or vigorously pipetting the protein. For long term storage, it is recommended to add a carrier protein or stabilizer (e.g. 0.1% BSA, 5% HSA, 10% FBS or 5% Trehalose), and aliquot the reconstituted protein solution to minimize free-thaw cycles.

Contact

 | 400-999-6126 | cn.market@abclonal.com.cn | www.abclonal.com.cn

Background

Calumenin is a secreted calcium-binding protein that belongs to the CREC family. Calumenin contains six EF-hand domains and is expressed at high levels in the heart, placenta and skeletal muscle. Human Calumenin is synthesized as a 315 amino acid precursor that contains a 19 amino acid signal sequence, and a 296 amino acid mature chain. Calumenin localizes to the endoplasmic reticulum (ER) and sarcoplasmic reticulum (SR) of mammalian tissues which plays a role in ER functions as protein folding and sorting. Calumenin is involved in the regulation of vitamin K-dependent carboxylation of multiple N-terminal glutamate residues. It seems to inhibit γ-carboxylase GGCX.

Basic Information

Description

Recombinant Human Calumenin/CALU Protein is produced by HEK293 cells expression system. The target protein is expressed with sequence (Lys20-Phe315) of Human Calumenin/CALU (Accession #NP_001210.1) fused with a 6×His tag at the C-terminus.

Bio-Activity

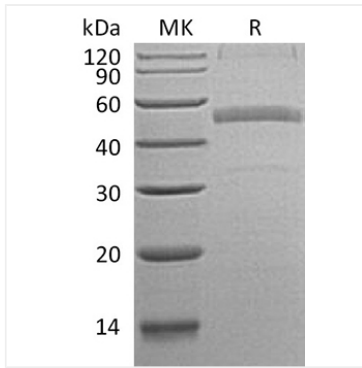
Storage

Store at -20°C. Store the lyophilized protein at -20°C to -80 °C up to 1 year from the date of receipt.

After reconstitution, the protein solution is stable at -20°C for 3 months, at 2-8°C for up to 1 week.

Avoid repeated freeze/thaw cycles.

Validation Data



Recombinant Human Calumenin Protein was determined by SDS-PAGE with Coomassie Blue, RP02945 was determined by SDS-PAGE with Coomassie Blue, showing bands at 40-55 kDa.