

**Catalog No.: RP02962** **Recombinant**

Species	Gene ID	Swiss Prot
Human	6362	P55774

**Tags**  
No-Tag

CCL18;AMAC-1;AMAC1;CKb7;DC-CK1;DCCK1;MIP-4;PARC;SCYA18; PARC; AMAC1; DCCK1; MIP-4; AMAC-1; DC-CK1; SCYA18

<b>Source</b>	<b>Purification</b>
Yeast	≥ 95 % as determined by SDS-PAGE

Calculated MW	Observed MW
7.86 kDa	10-15 kDa

< 0.1 EU/μg of the protein by LAL method.

Lyophilized from a 0.22  $\mu\text{m}$  filtered solution of PBS, pH 7.4.

Centrifuge the vial before opening. Reconstitute to a concentration of 0.1-0.5 mg/mL in sterile distilled water. Avoid vortex or vigorously pipetting the protein. For long term storage, it is recommended to add a carrier protein or stabilizer (e.g. 0.1% BSA, 5% HSA, 10% FBS or 5% Trehalose), and aliquot the reconstituted protein solution to minimize free-thaw cycles.

 | 400-999-6126

 | [cn.market@abclonal.com.cn](mailto:cn.market@abclonal.com.cn)

 | [www.abclonal.com.cn](http://www.abclonal.com.cn)

CCL18 is a chemotactic cytokine involved in the pathogenesis and progression of various disorders, including cancer. Proof showed high levels of CCL18 in the serum of epithelial ovarian carcinoma patients suggesting its potential as a circulating biomarker. CCL18 chemokine has an important role in chemokine-mediated tumor metastasis, and may serve as a potential predictor for poor survival outcomes for ovarian cancer. (CCL18) is predominantly secreted by M2-tumor associated macrophages (TAMs) and promotes malignant behaviors of various human cancer types. CCL18 has a correlation with cardiac function in patients with AAMI and it might be considered as an indicator of poor LVEF in patients with AAMI. Circulating and WAT-secreted CCL18 correlates with insulin resistance and metabolic risk score. Because CCL18 is macrophage-specific and associates with adipose immune gene expression, it may constitute a marker of WAT inflammation. Macrophages are thought to be the main source of CCL18, and the effect of pirfenidone, an anti-fibrotic agent for idiopathic pulmonary fibrosis, on the expression of CCL18 in macrophages warrants investigation.

Recombinant Human CCL18/PARC Protein is produced by Yeast expression system. The target protein is expressed with sequence (Ala21-Ala89) of human CCL18/PARC (Accession #NP\_002979.1) fused with no tag .

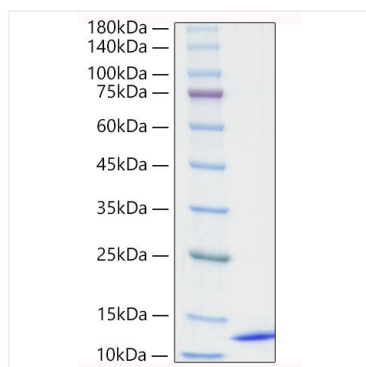
The product is shipped at ambient temperature. Upon receipt, store it immediately at the temperature recommended below.

Store at -20°C. Store the lyophilized protein at -20°C to -80 °C up to 1 year from the date of receipt.  
After reconstitution, the protein solution is stable at -20°C for 3 months, at 2-8°C for up to 1 week.  
Avoid repeated freeze/thaw cycles.

For your safety and health, please wear a lab coat and disposable gloves for handling.

## Validation Data

---



Recombinant Human CCL18/PARC Protein was determined by SDS-PAGE under reducing conditions with Coomassie Blue.