

Recombinant Human GAS-6 Protein

Catalog No.: RP02964 **Recombinant**

Sequence Information

Species	Gene ID	Swiss Prot
Human	2621	Q14393-2

Tags

C-His

Synonyms

GAS6;AXLLG;AXSF

Product Information

Source	Purification
HEK293 cells	> 95% as determined by HPLC

Endotoxin

<1EU/μg

Formulation

Supplied as a 0.22 μm filtered solution in 20mM Tris, 500mM NaCl (pH 8.5).

Reconstitution

Background

Growth arrest-specific 6, also known as Gas6, is a human gene encoding the Gas6 protein, which was originally found to be upregulated in growth-arrested fibroblasts. Gas6 is a member of the vitamin K-dependent family of proteins expressed in many human tissues and regulates several biological processes in cells, including proliferation, survival and migration, by binding to its receptors Tyro3, Axl and Mer (TAM).

Basic Information

Description

Recombinant Human GAS-6 Protein is produced by HEK293 cells expression system. The target protein is expressed with sequence (Ala49-Ala678) of human GAS-6 (Accession #NP_000811.1) fused with a 6×His tag at the C-terminus.

Bio-Activity

Immobilized Human GAS6, His Tag at 5μg/ml (100μl/well) on the plate. Dose response curve for Human Axl with the EC₅₀ of 7.5ng/ml determined by ELISA.

Storage

This product is stable at ≤ -70°C for up to 1 year from the date of receipt. For optimal storage, aliquot into smaller quantities after centrifugation and store at recommended temperature. Avoid repeated freeze/thaw cycles.

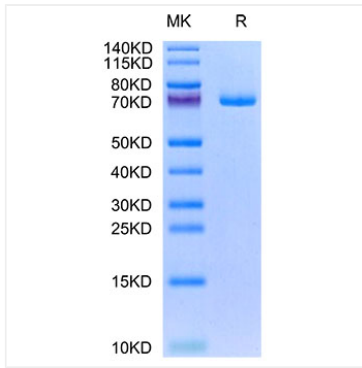
Contact

 | 400-999-6126

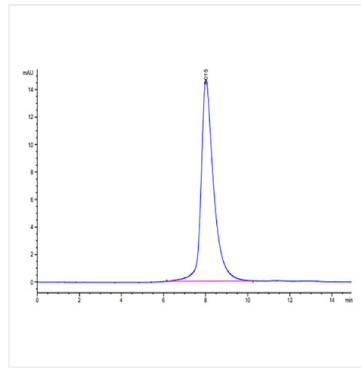
 | cn.market@abclonal.com.cn

 | www.abclonal.com.cn

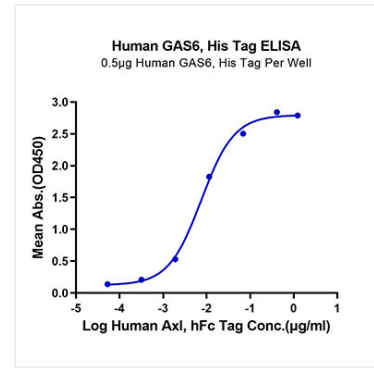
Validation Data



Recombinant Human GAS-6 Protein was determined by SDS-PAGE with Coomassie Blue, showing bands at 71-75 kDa.



The purity of Human GAS6 is greater than 95% as determined by SEC-HPLC.



Immobilized Human GAS6, His Tag at 5µg/ml (100µl/well) on the plate. Dose response curve for Human Ax1 with the EC₅₀ of 7.5ng/ml determined by ELISA.