

Recombinant Human SFRP2 Protein

Catalog No.: RP02970LQ **Recombinant**

Sequence Information

Species	Gene ID	Swiss Prot
Human	6423	Q96HF1

Tags

C-His

Synonyms

sFRP-2; SARP-1; Sarp1; Sdf5; Sfrp2;
AI851596

Product Information

Source	Purification
HEK293 cells	> 95% by SDS-PAGE.

Endotoxin

<1EU/μg

Formulation

Lyophilized from a 0.22 μm filtered solution of 20mM PBS, 100mM L-arginine (pH 7.4). Contact us for customized product form or formulation.

Reconstitution

Centrifuge the vial before opening. Reconstitute to a concentration of 0.1-0.5 mg/mL in sterile distilled water. Avoid vortex or vigorously pipetting the protein. For long term storage, it is recommended to add a carrier protein or stabilizer (e.g. 0.1% BSA, 5% HSA, 10% FBS or 5% Trehalose), and aliquot the reconstituted protein solution to minimize free-thaw cycles.

Contact

 | 400-999-6126 | cn.market@abclonal.com.cn | www.abclonal.com.cn

Background

As biomarkers, DNA methylation is used to detect colorectal cancer (CRC) and make assessment of CRC prognosis. The published findings showed the association between the methylation of SFRP1, SFRP2, and WIF1, located in the Wnt signaling pathway, and the prognosis of CRC were not consistent. SFRP1, SFRP2, and WIF1 were frequently hypermethylated in CRC tumor tissues. It was apparent that the promoter hypermethylation of SFRP2 and co-hypermethylation of SFRP1 and SFRP2 might be considered as independent prognostic predictors for survival advantage of postoperative CRC patients.

Basic Information

Description

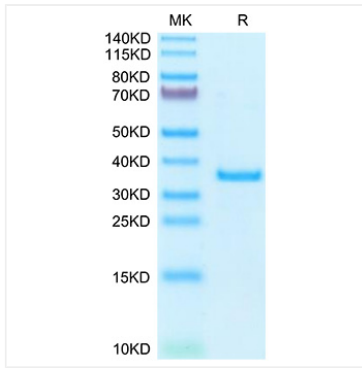
Recombinant Human SFRP2 Protein is produced by HEK293 cells expression system. The target protein is expressed with sequence (Leu25-Cys295) of human SFRP2 (Accession #NP_003004.1) fused with a 6×His tag at the C-terminus.

Bio-Activity

Storage

Store at -20°C. This product is stable at -20°C to -80 °C up to 1 year from the date of receipt. For optimal storage, aliquot into smaller quantities after centrifugation and store at recommended temperature. Avoid repeated freeze-thaw cycles. Avoid repeated freeze/thaw cycles.

Validation Data



Recombinant Human SFRP2 Protein was determined by SDS-PAGE with Coomassie Blue, showing a band at 34-38 kDa.