

Recombinant Human KRAS-WT(GDP load) Protein

Catalog No.: RP02972LQ **Recombinant**

Sequence Information

| Species | Gene ID | Swiss Prot |
|---------|---------|------------|
| Human | 3845 | P01116-2 |

Tags

N-8His

Synonyms

NS; NS3; OES; CFC2; RALD; K-Ras;
KRAS1; KRAS2; RASK2; KI-RAS; C-K-RAS;
K-RAS2A; K-RAS2B; K-RAS4A; K-RAS4B;
K-Ras 2; 'C-K-RAS; c-Ki-ras; c-Ki-ras2

Product Information

| Source | Purification |
|----------------|-------------------|
| <i>E. coli</i> | > 95% by SDS-PAGE |

Endotoxin

Formulation

Supplied as a 0.22 µm filtered solution in
5 mM Tris, 50 mM NaCl, 1 mM MgCl₂, 1
mM DTT, 10% glycerol, pH 7.5

Reconstitution

Background

Basic Information

Description

Recombinant human KRAS-WT protein with N-terminal 8x his tag+ TEV cleavage site and C-terminal avi tag was purified by Ni-NTA affinity and followed by SEC chromatography. The KRAS-WT protein showed high activity in HTRF assay

Bio-Activity

KRAS-WT activity test using HTRF method.

Storage

This product is stable at ≤ -70°C for up to 1 year from the date of receipt.
For optimal storage, aliquot into smaller quantities after centrifugation and store at recommended temperature.

Avoid repeated freeze/thaw cycles.

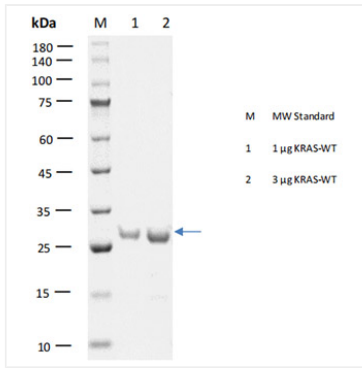
Contact

 | 400-999-6126

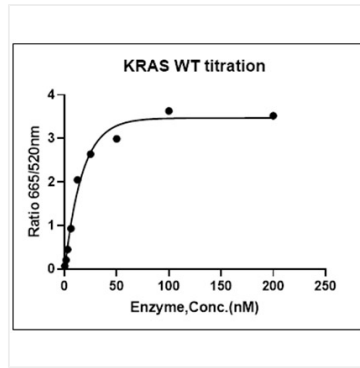
 | cn.market@abclonal.com.cn

 | www.abclonal.com.cn

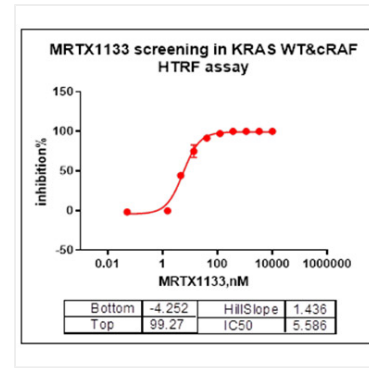
Validation Data



Recombinant Human KRAS-WT(GDP load)
 Protein was determined by SDS-PAGE with
 Coomassie Blue, showing bands at 23.5 kDa.



KRAS-WT activity test using HTRF method.
 The KRAS-WT activity was assayed with
 HTRF technology. The reaction was
 performed by incubating the KRAS- WT
 protein, GTP, cRAF and beads at 25°C for 60
 min, then reading Ratio 665/620nm signal
 with BMG.



KRAS-WT activity test using HTRF method.
 The KRAS-WT activity was assayed with
 HTRF technology. The reaction was
 performed by incubating the KRAS- WT
 protein, GTP, cRAF and beads at 25°C for 60
 min, then reading Ratio 665/620nm signal
 with BMG.