

# Recombinant Human KRAS-G13C Protein

Catalog No.: RP02977LQ **Recombinant**

## Sequence Information

Species	Gene ID	Swiss Prot
Human	3845	P01116-2

### Tags

N-8His

### Synonyms

NS; NS3; OES; CFC2; RALD; K-Ras;  
KRAS1; KRAS2; RASK2; KI-RAS; C-K-RAS;  
K-RAS2A; K-RAS2B; K-RAS4A; K-RAS4B;  
K-Ras 2; 'C-K-RAS; c-Ki-ras; c-Ki-ras2

## Product Information

Source	Purification
<i>E. coli</i>	> 95% by SDS-PAGE

### Endotoxin

### Formulation

Supplied as a 0.22  $\mu$ m filtered solution in 20mM Tris, 150mM NaCl, 1mM DTT, 10% glycerol, pH7.4

### Reconstitution

## Background

### Basic Information

#### Description

Recombinant human KRAS-G13C protein with N-terminal 8x his tag+ TEV cleavage site and C-terminal Avi tag was purified by Ni-NTA affinity and followed by SEC chromatography. The KRAS-G13C protein showed high activity in HTRF assay.

#### Bio-Activity

KRAS-G13C activity test using HTRF method.

#### Storage

This product is stable at  $\leq -70^{\circ}\text{C}$  for up to 1 year from the date of receipt. For optimal storage, aliquot into smaller quantities after centrifugation and store at recommended temperature.

Avoid repeated freeze/thaw cycles.

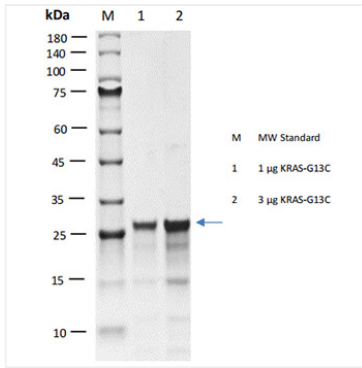
## Contact

 | 400-999-6126

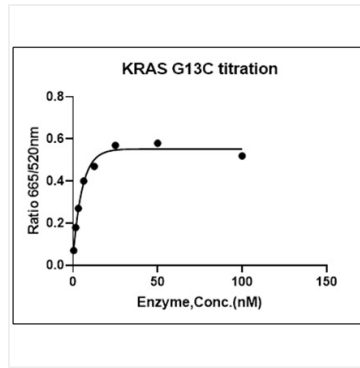
 | [cn.market@abclonal.com.cn](mailto:cn.market@abclonal.com.cn)

 | [www.abclonal.com.cn](http://www.abclonal.com.cn)

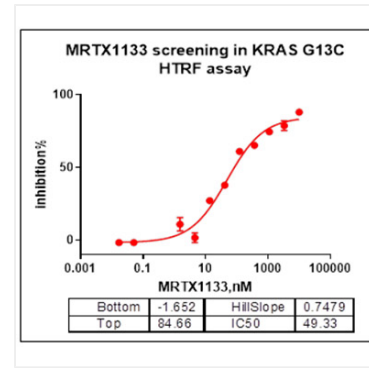
## Validation Data



Recombinant Human KRAS-G13C Protein was determined by SDS-PAGE with Coomassie Blue, showing bands at 23.6 kDa.



KRAS-G13C activity test using HTRF method. The KRAS-G13C activity was assayed with HTRF technology. The reaction was performed by incubating the KRAS-G13C protein, GTP, cRAF and beads at 25°C for 60 min, then reading Ratio 665/620nm signal with BMG.



KRAS-G13C activity test using HTRF method. The KRAS-G13C activity was assayed with HTRF technology. The reaction was performed by incubating the KRAS-G13C protein, GTP, cRAF and beads at 25°C for 60 min, then reading Ratio 665/620nm signal with BMG.