

Recombinant Human KRAS-G13D Protein

Catalog No.: RP02978LQ **Recombinant**

Sequence Information

Species	Gene ID	Swiss Prot
Human	3845	P01116-2

Tags

N-8His

Synonyms

NS; NS3; OES; CFC2; RALD; K-Ras;
KRAS1; KRAS2; RASK2; KI-RAS; C-K-RAS;
K-RAS2A; K-RAS2B; K-RAS4A; K-RAS4B;
K-Ras 2; 'C-K-RAS; c-Ki-ras; c-Ki-ras2

Product Information

Source	Purification
<i>E. coli</i>	> 95% by SDS-PAGE

Endotoxin

Formulation

Supplied as a 0.22 μ m filtered solution in 20mM Tris, 150mM NaCl, 1mM DTT, 10% glycerol, pH7.4

Reconstitution

Background

Basic Information

Description

Recombinant human KRAS-G13D protein with N-terminal 8x his tag+ TEV cleavage site and C-terminal Avi tag was purified by Ni-NTA affinity and followed by SEC chromatography. The KRAS-G13D protein showed high activity in HTRF assay.

Bio-Activity

KRAS-G13D activity test using HTRF method.

Storage

This product is stable at $\leq -70^{\circ}\text{C}$ for up to 1 year from the date of receipt. For optimal storage, aliquot into smaller quantities after centrifugation and store at recommended temperature.

Avoid repeated freeze/thaw cycles.

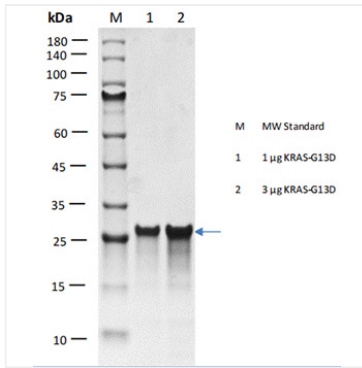
Contact

 | 400-999-6126

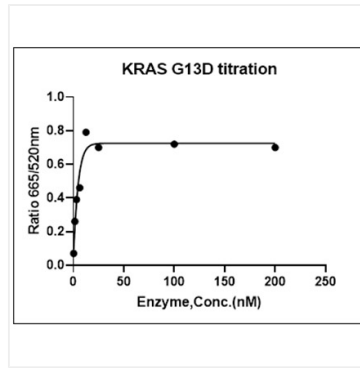
 | cn.market@abclonal.com.cn

 | www.abclonal.com.cn

Validation Data



Recombinant Human KRAS-G13D Protein was determined by SDS-PAGE with Coomassie Blue, showing bands at 23.6 kDa.



KRAS-G13D activity test using HTRF method. The KRAS-G13D activity was assayed with HTRF technology. The reaction was performed by incubating the KRAS-G13D protein, GTP, cRAF and beads at 25°C for 60 min, then reading Ratio 665/620nm signal with BMG.