

Recombinant Human Ezrin/EZR Protein

Catalog No.: RP02986LQ **Recombinant**

Sequence Information

| Species | Gene ID | Swiss Prot |
|---------|---------|------------|
| Human | 7430 | P15311 |

Tags

No tag

Synonyms

Ezrin; Cytovillin; Villin-2; p81; EZR; VIL2

Product Information

| Source | Purification |
|----------------|--------------------|
| <i>E. coli</i> | > 95% by SDS-PAGE. |

| Calculated MW | Observed MW |
|---------------|-------------|
| 69.4 kDa | 80 kDa |

Endotoxin

<1EU/μg

Formulation

Supplied as a 0.2 μm filtered solution of 10mM HEPES, pH 7.4.

Reconstitution

Background

Ezrin is expressed in cerebral cortex, basal ganglia, hippocampus, hypophysis, and optic nerve. The N-terminus of ezrin contains a FERM domain which is further subdivided into three subdomains. The C-terminus contain a ERM domain. As a member of the ERM protein family, Ezrin serves as an intermediate between the plasma membrane and the actin cytoskeleton. It plays a key role in cell surface structure adhesion, migration, and organization. Ezrin probably involved in connections of major cytoskeletal structures to the plasma membrane. The N-terminal FERM domain strongly binds sodium-hydrogen exchanger regulatory factor (NHERF) proteins (involving long-range allostery). The C-terminal binds to actin, phosphatidylinositol bis-phosphate (PIP2) and membrane proteins like CD44 and ICAM-2. In epithelial cells, Ezrin is required for the formation of microvilli and membrane ruffles on the apical pole. Along with PLEKHG6, Ezrin is required for normal macropinocytosis.

Basic Information

Description

Recombinant Human Ezrin/EZR Protein is produced by *E. coli* expression system. The target protein is expressed with sequence (Met1-Leu586) of human Ezrin/EZR (Accession #NP_001104547.1) fused with no additional amino acid.

Bio-Activity

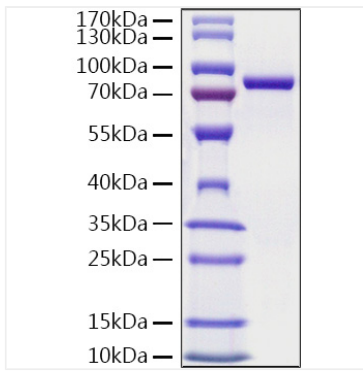
Storage

Store at -70°C. This product is stable at ≤ -70°C for up to 1 year from the date of receipt. For optimal storage, aliquot into smaller quantities after centrifugation and store at recommended temperature. Avoid repeated freeze-thaw cycles. Avoid repeated freeze/thaw cycles.

Contact

 | 400-999-6126 | cn.market@abclonal.com.cn | www.abclonal.com.cn

Validation Data



Recombinant Human Ezrin/EZR Protein was determined by SDS-PAGE with Coomassie Blue, showing a band at 80 KDa.