

# Recombinant Mouse Lymphotactin/XCL1 Protein

Catalog No.: RP02989 **Recombinant**

## Sequence Information

Species	Gene ID	Swiss Prot
Mouse	16963	P47993

### Tags

C-His

### Synonyms

LTN; ATAC; LPTN; SCM1; SCM-1; SCM1A; SCYC1; SCM-1a

## Product Information

Source	Purification
Baculovirus-Insect Cells	> 85% by SDS-PAGE.

Calculated MW	Observed MW
11.5 kDa	20 kDa

### Endotoxin

&lt;1EU/μg

### Formulation

Lyophilized from sterile 50mM Tris, 100mM NaCl, pH 7.4, 10% gly

### Reconstitution

Centrifuge the vial before opening. Reconstitute to a concentration of 0.1-0.5 mg/mL in sterile distilled water. Avoid vortex or vigorously pipetting the protein. For long term storage, it is recommended to add a carrier protein or stabilizer (e.g. 0.1% BSA, 5% HSA, 10% FBS or 5% Trehalose), and aliquot the reconstituted protein solution to minimize free-thaw cycles.

## Background

This antimicrobial gene encodes a member of the chemokine superfamily. Chemokines function in inflammatory and immunological responses, inducing leukocyte migration and activation. The encoded protein is a member of the C-chemokine subfamily, retaining only two of four cysteines conserved in other chemokines, and is thought to be specifically chemotactic for T cells. This gene and a closely related family member are located on the long arm of chromosome 1.

## Basic Information

### Description

Recombinant Mouse Lymphotactin/XCL1 Protein is produced by Baculovirus-Insect Cells expression system. The target protein is expressed with sequence (Val22-Gly114) of mouse Lymphotactin/XCL1 (Accession #NP\_032536.1) fused with a 6×His tag at the C-terminus.

### Bio-Activity

### Storage

Store at -20°C. Store the lyophilized protein at -20°C to -80 °C up to 1 year from the date of receipt.

After reconstitution, the protein solution is stable at -20°C for 3 months, at 2-8°C for up to 1 week.

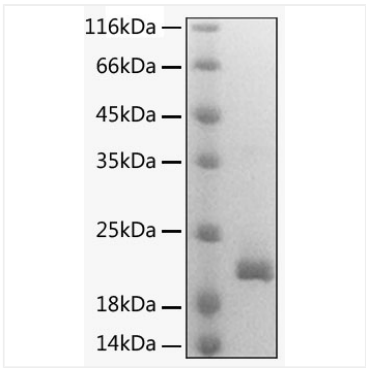
Avoid repeated freeze/thaw cycles.

## Contact

 | 400-999-6126 | [cn.market@abclonal.com.cn](mailto:cn.market@abclonal.com.cn) | [www.abclonal.com.cn](http://www.abclonal.com.cn)

# Validation Data

---



Recombinant Mouse Lymphotactin/XCL1  
Protein was determined by SDS-PAGE with  
Coomassie Blue, showing bands at 20 kDa.