

Recombinant Human CISD1 Protein

Catalog No.: RP02993 **Recombinant**

Sequence Information

Species	Gene ID	Swiss Prot
Human	55847	Q9NZ45

Tags

N-His

Synonyms

C10orf70; MDS029; mitoNEET; ZCD1

Product Information

Source	Purification
<i>E. coli</i>	>90% as determined by SDS-PAGE

Endotoxin

Please contact us for more information.

Formulation

Lyophilized from a 0.22 µm filtered solution of 20 mM Tris, 150 mM NaCl, 10 % glycerol.

Reconstitution

Centrifuge the vial before opening. Reconstitute to a concentration of 0.1-0.5 mg/mL in sterile distilled water. Avoid vortex or vigorously pipetting the protein. For long term storage, it is recommended to add a carrier protein or stabilizer (e.g. 0.1% BSA, 5% HSA, 10% FBS or 5% Trehalose), and aliquot the reconstituted protein solution to minimize free-thaw cycles.

Contact

 | 400-999-6126 | cn.market@abclonal.com.cn | www.abclonal.com.cn

Background

Mitochondrial dysfunction is thought to play a significant role in neurodegeneration observed in Parkinson's disease (PD), the loss of mitoNEET (CISD1), an iron-sulfur containing protein that regulates mitochondrial bioenergetics, results in mitochondrial dysfunction and loss of striatal dopamine and tyrosine hydroxylase. CDGSH iron sulfur domain 1 (CISD1, also termed mitoNEET), an iron-containing outer mitochondrial membrane protein, negatively regulates ferroptotic cancer cell death. At the cellular level, CISD1 gene expression increased during human adipocyte differentiation in correlation with adipogenic genes. Thus it is a possible role of CISD1 in obesity-associated dysfunctional adipogenesis in human VAT.

Basic Information

Description

Recombinant Human CISD1 Protein is produced by *E. coli* expression system. The target protein is expressed with sequence (Lys32-Thr108) of human CISD1 (Accession #NP_060934.1) fused with a 6×His tag at the N-terminus.

Bio-Activity

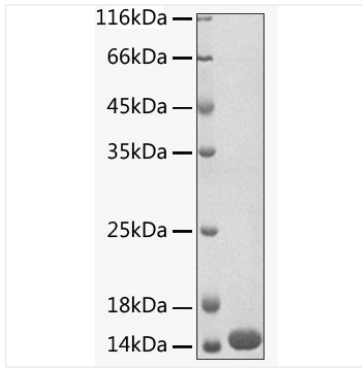
Storage

Store the lyophilized protein at -20°C to -80°C for 12 months.

After reconstitution, the protein solution is stable at -20°C to -80°C for 3 months, at 2-8°C for up to 1 week.

Avoid repeated freeze/thaw cycles.

Validation Data



Recombinant Human CISD1 Protein was determined by SDS-PAGE with Coomassie Blue, showing a band at 14 kDa.