

# Recombinant Mouse Cathepsin B Protein

Catalog No.: RP02994 **Recombinant**

## Sequence Information

Species	Gene ID	Swiss Prot
Mouse	13030	P10605

### Tags

C-His

### Synonyms

Cathepsin B; 3.4.22.1; APP secretase; APPS; Cathepsin B1;CTSB

## Product Information

Source	Purification
HEK293 cells	>95% as determined by SDS-PAGE

### Endotoxin

<1EU/μg

### Formulation

Lyophilized from a 0.22 μm filtered solution of PBS, pH 7.4.

### Reconstitution

Centrifuge the vial before opening. Reconstitute to a concentration of 0.1-0.5 mg/mL in sterile distilled water. Avoid vortex or vigorously pipetting the protein. For long term storage, it is recommended to add a carrier protein or stabilizer (e.g. 0.1% BSA, 5% HSA, 10% FBS or 5% Trehalose), and aliquot the reconstituted protein solution to minimize free-thaw cycles.

## Contact

☎ | 400-999-6126

✉ | [cn.market@abclonal.com.cn](mailto:cn.market@abclonal.com.cn)

🌐 | [www.abclonal.com.cn](http://www.abclonal.com.cn)

## Background

### Basic Information

#### Description

Recombinant Mouse Cathepsin B Protein is produced by HEK293 cells expression system. The target protein is expressed with sequence (His18-Phe339) of mouse Cathepsin B (Accession #NP\_031824.1) fused with a 6×His tag at the C-terminus.

#### Bio-Activity

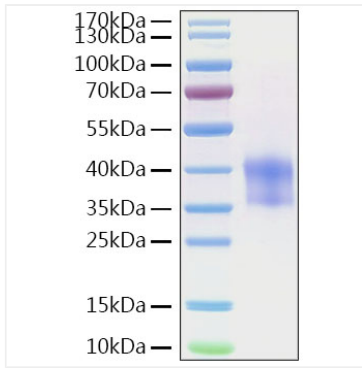
Measured by its ability to cleave the fluorogenic peptide substrate Z-LR-AMC (R&D Systems, Catalog # ES008). The specific activity is >2,000 pmoles/min/μg.

#### Storage

Store the lyophilized protein at -20°C to -80°C for 12 months. After reconstitution, the protein solution is stable at -20°C to -80°C for 3 months, at 2-8°C for up to 1 week. Avoid repeated freeze/thaw cycles.

## Validation Data

---



Recombinant Mouse Cathepsin B Protein was determined by SDS-PAGE with Coomassie Blue, showing a band at 35-43 kDa.