

Recombinant Human IFI30 Protein

Catalog No.: RP02995 **Recombinant**

Sequence Information

Species	Gene ID	Swiss Prot
Human	10437	P13284

Tags

C-His

Synonyms

GILT; IFI-30; IFI30; IP-30; IP30

Product Information

Source	Purification
HEK293 cells	> 96 % as determined by SDS-PAGE

Calculated MW Observed MW

Endotoxin

< 1.0 EU per µg of the protein as determined by the LAL method

Formulation

Lyophilized from sterile PBS, pH 7.4

Reconstitution

Centrifuge the vial before opening. Reconstitute to a concentration of 0.1-0.5 mg/mL in sterile distilled water. Avoid vortex or vigorously pipetting the protein. For long term storage, it is recommended to add a carrier protein or stabilizer (e.g. 0.1% BSA, 5% HSA, 10% FBS or 5% Trehalose), and aliquot the reconstituted protein solution to minimize free-thaw cycles.

Contact

 | 400-999-6126

 | cn.market@abclonal.com.cn

 | www.abclonal.com.cn

Background

Basic Information

Description

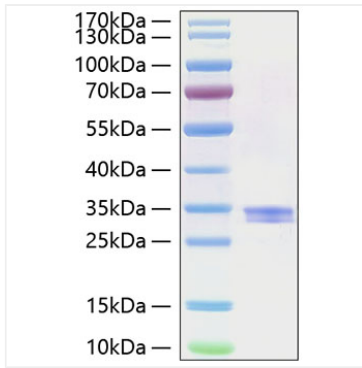
Recombinant Human IFI30 Protein is produced by HEK293 cells expression system. The target protein is expressed with sequence (Met1-Lys243) of human IFI30 (Accession #NP_006323.2) fused with a 6×His tag at the C-terminus.

Bio-Activity

Storage

Samples are stable for up to twelve months from date of receipt at -20°C to -80°C. Store it under sterile conditions at -20°C to -80°C. It is recommended that the protein be aliquoted for optimal storage. Avoid repeated freeze-thaw cycles. Avoid repeated freeze/thaw cycles.

Validation Data



Recombinant Human IFI30 Protein was determined by SDS-PAGE with Coomassie Blue, The apparent molecular mass of the protein is approximately 31-34 kDa in SDS-PAGE under reducing conditions.