

# Recombinant Human Claudin-4 Protein

Catalog No.: RP02997LQ **Recombinant**

## Sequence Information

Species	Gene ID	Swiss Prot
Human	1364	O14493

### Tags

No tag

### Synonyms

Claudin-4; CLDN4; Claudin4; CPE-R; CPE R; CPETR1; WBSR8

## Product Information

Source	Purification
HEK293 cells	> 95% as determined by HPLC

### Endotoxin

Less than 1EU per µg by the LAL method.

### Formulation

Supplied as 0.22µm filtered solution in PBS (pH 7.4). Notice: If you need it for immunization, Do Not use any adjuvant.

### Reconstitution

## Background

Claudin-4 (CLDN4) is a key component of tight junctions (TJs) in epithelial cells. CLDN4 is overexpressed in many epithelial malignancies and correlates with cancer progression. Changes in CLDN4 expression have been associated with epigenetic factors (such as hypomethylation of promoter DNA), inflammation associated with infection and cytokines, and growth factor signaling. CLDN4 helps to maintain the tumor microenvironment by forming TJs and acts as a barrier to the entry of anticancer drugs into tumors.

## Basic Information

### Description

Recombinant Human Claudin-4 Protein is produced by HEK293 cells expression system. The target protein is expressed with sequence (Met1-Val209) of human Claudin-4 (Accession #NP\_001296.1 ) fused with no additional amino acid.

### Bio-Activity

Immobilized Human Claudin-4 VLP at 1µg/ml (100µl/well) on the plate. Dose response curve for Anti-Claudin 4 Antibody, hFc Tag with the EC<sub>50</sub> of 18.4ng/ml determined by ELISA.

### Storage

Valid for 12 months from date of receipt when stored at -80°C. Recommend to aliquot the protein into smaller quantities for optimal storage. Please minimize freeze-thaw cycles. Avoid repeated freeze/thaw cycles.

## Contact

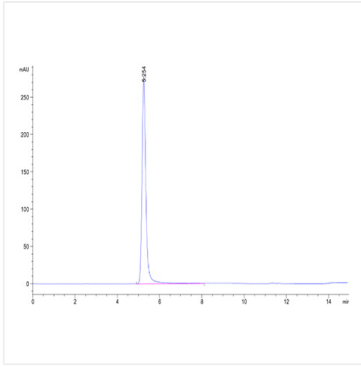
 | 400-999-6126

 | [cn.market@abclonal.com.cn](mailto:cn.market@abclonal.com.cn)

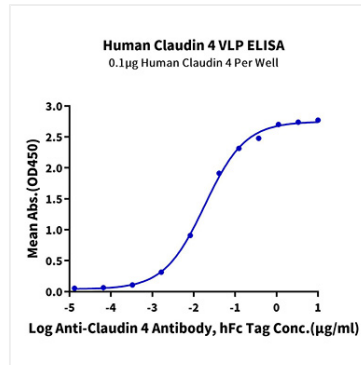
 | [www.abclonal.com.cn](http://www.abclonal.com.cn)

## Validation Data

---



The purity of Human Claudin-4 VLP is greater than 95% as determined by SEC-HPLC.



Immobilized Human Claudin-4 VLP at 1µg/ml (100µl/well) on the plate. Dose response curve for Anti-Claudin 4 Antibody, hFc Tag with the EC<sub>50</sub> of 18.4ng/ml determined by ELISA.