

Catalog No.: RP03101LQ **Recombinant**

Species	Gene ID	Swiss Prot
Human	10747	O00187

C-His

MAP19; MASP-2; MASP1P1; sMap

Source <i>E. coli</i>	Purification ≥ 95 % as determined by Tris- Bis PAGE.
---------------------------------	--

46.9 kDa 18. 25-30 kDa

< 1 EU/μg of the protein by LAL method.

Supplied as a 0.22 µm filtered solution in 20mM Tris, 200mM NaCl (pH 9.0).
Contact us for customized product form or formulation.

Contact

 | 400-999-6126

 | cn.market@abclonal.com.cn

 | www.abclonal.com.cn

The pathogenesis of severe acute respiratory disease syndrome (SARS) is not fully understood. One case-control study has reported an association between susceptibility to SARS and mannan-binding lectin (MBL) in China. As the downstream protein of MBL, variants of the MBL-associated serine protease-2 (MASP2) gene may be associated with SARS coronavirus (SARS-CoV) infection in the same population.

Recombinant Human MASP2 Protein is produced by *E. coli* expression system. The target protein is expressed with sequence (Gly288-Phe686) of Human MASP2 (Accession # NP_006601.2) fused with His tag at the C-Terminus.

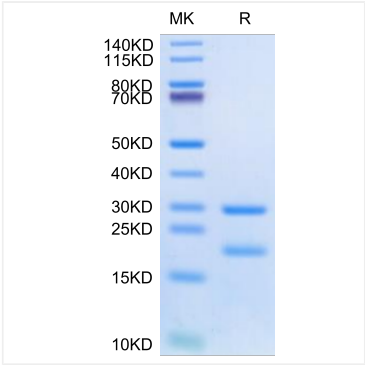
1. Immobilized Human MASP2, His Tag at 0.2µg/ml (100µl/Well). Dose response curve for Anti-MASP2 Antibody, hFc Tag with the EC₅₀ of 3.0ng/ml determined by ELISA (QC Test). [2. Anti-MASP2 Antibody captured on CM5 Chip via Protein A can bind Human MASP2, His Tag with an affinity constant of 3.08 nM as determined in SPR assay (Biacore T200).

The product is shipped at ambient temperature. Upon receipt, store it immediately at the temperature recommended below.

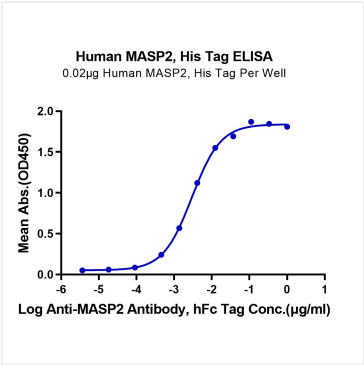
Store at -70°C. This product is stable at $\leq -70^{\circ}\text{C}$ for up to 1 year from the date of receipt. For optimal storage, aliquot into smaller quantities after centrifugation and store at recommended temperature. Avoid repeated freeze-thaw cycles.

For your safety and health, please wear a lab coat and disposable gloves for handling.

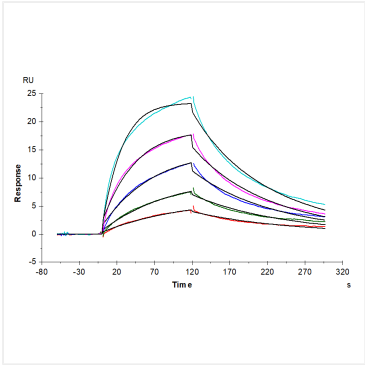
Validation Data



Recombinant Human MASP2 Protein was determined by SDS-PAGE under reducing conditions with Coomassie Blue.



Immobilized Human MASP2, His Tag at 0.2µg/ml (100µl/Well). Dose response curve for Anti-MASP2 Antibody, hFc Tag with the EC₅₀ of 3.0ng/ml determined by ELISA (QC Test).



Anti-MASP2 Antibody captured on CM5 Chip via Protein A can bind Human MASP2, His Tag with an affinity constant of 3.08 nM as determined in SPR assay (Biacore T200).