

**Catalog No.: RP03102LQ** **Recombinant**

Species	Gene ID	Swiss Prot
Mouse	17175	O91WP0

## C-His

**Synonyms**  
MAP19; MASP-2; MASP1P1; sMap

<b>Source</b>	<b>Purification</b>
<i>E. coli</i>	≥ 95 % as determined by Tris-Bis PAGE.

Calculated MW	Observed MW
46.6 kDa	18-20, 27-30 kDa

< 1 EU/μg of the protein by LAL method.

Supplied as a 0.22 µm filtered solution in 50mM Tris, 200mM NaCl (pH 9.0).  
Contact us for customized product form or formulation.

## Contact

 | 400-999-6126

 | [cn.market@abclonal.com.cn](mailto:cn.market@abclonal.com.cn)

 | [www.abclonal.com.cn](http://www.abclonal.com.cn)

The dysregulation of complement cascade leads to unsolicited cytokine storm, inflammation, deterioration of alveolar lining cells, culminating in acquired respiratory destructive syndrome (ARDS). Similar pathogenesis is observed with the middle east respiratory syndrome (MERS), severe acquired respiratory syndrome (SARS), and SARS-CoV-2. Activation of the lectin pathway via mannose-binding lectin associated serine protease 2 (MASP2) is witnessed under discrete viral infections including COVID-19.

Recombinant Mouse MASP2 Protein is produced by *E. coli* expression system. The target protein is expressed with sequence (Thr287-Phe685) of Mouse MASP2 (Accession # NP\_001003893.1) fused with His tag at the C-Terminus.

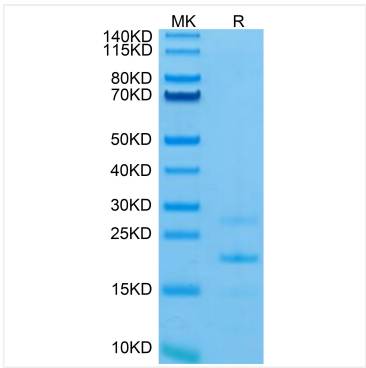
Immobilized Mouse MASP2, His Tag at 0.5µg/ml (100µl/well) on the plate. Dose response curve for Anti-MASP2 Antibody, hFc Tag with the EC<sub>50</sub> of 5.1ng/ml determined by ELISA.

The product is shipped at ambient temperature. Upon receipt, store it immediately at the temperature recommended below.

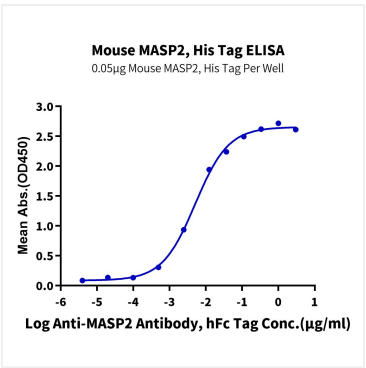
Store at -70°C. This product is stable at  $\leq -70^{\circ}\text{C}$  for up to 1 year from the date of receipt. For optimal storage, aliquot into smaller quantities after centrifugation and store at recommended temperature. Avoid repeated freeze-thaw cycles.

For your safety and health, please wear a lab coat and disposable gloves for handling.

Validation Data



Recombinant Mouse MASP2 Protein was determined by SDS-PAGE under reducing conditions with Coomassie Blue.



Immobilized Mouse MASP2, His Tag at 0.5µg/ml (100µl/well) on the plate. Dose response curve for Anti-MASP2 Antibody, hFc Tag with the EC<sub>50</sub> of 5.1 ng/ml determined by ELISA.