

# Recombinant Human CCR2/CD192 Protein

Catalog No.: RP03149LQ **Recombinant**

## Sequence Information

Species	Gene ID	Swiss Prot
Human	729230	P41597-2

### Tags

No tag

### Synonyms

C-C CKR-2; CCR-2; CCR2; MCP-1-R;  
CMKBR2; CCR2

## Product Information

Source	Purification
HEK293 cells	> 95% as determined by HPLC

### Endotoxin

< 1 EU/μg of the protein by LAL method.

### Formulation

Supplied as 0.22μm filtered solution in PBS (pH 7.4). If you need it for immunization, Do Not use any adjuvant.

### Reconstitution

## Background

The chemokine (C-C motif) receptor 2B (CCR2B) is one of the two isoforms of the receptor for monocyte chemoattractant protein-1 (CCL2), the major chemoattractant for monocytes, involved in an array of chronic inflammatory diseases. The actin-binding protein filamin A (FLNa) as a protein that associates with the carboxyl-terminal tail of CCR2B. FLNa emerges as an important protein for controlling the internalization and spatial localization of the CCR2B receptor in different dynamic membrane structures.

## Basic Information

### Description

Recombinant Human CCR2/CD192 Protein is produced by HEK293 cells expression system. The target protein is expressed with sequence (Met1-Leu360) of Human CCR2 (Accession #NP\_001116868.1) .

### Bio-Activity

Immobilized Human CCR2 at 5μg/ml (100μl/Well) on the plate. Dose response curve for Anti-CCR2b Antibody, hFc Tag with the EC50 of 12.0ng/ml determined by ELISA.

### Storage

Store at -70°C. This product is stable at ≤ -70°C for up to 1 year from the date of receipt. For optimal storage, aliquot into smaller quantities after centrifugation and store at recommended temperature. Avoid repeated freeze-thaw cycles. Avoid repeated freeze/thaw cycles.

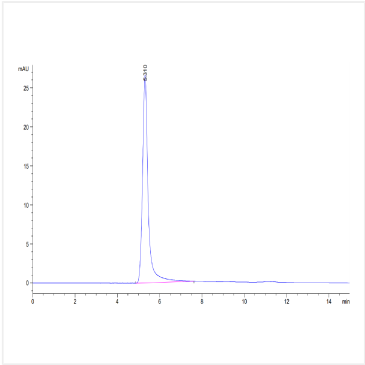
## Contact

☎ | 400-999-6126

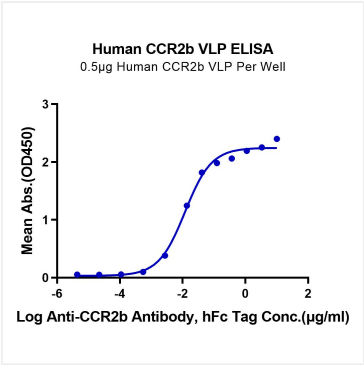
✉ | [cn.market@abclonal.com.cn](mailto:cn.market@abclonal.com.cn)

🌐 | [www.abclonal.com.cn](http://www.abclonal.com.cn)

Validation Data



The purity of Human CCR2 is greater than 95% as determined by SEC-HPLC.



Immobilized Human CCR2 at 5µg/ml (100µl/Well) on the plate. Dose response curve for Anti-CCR2b Antibody, hFc Tag with the EC50 of 12.0ng/ml determined by ELISA.