

Recombinant Human LYVE-1 Protein

Catalog No.: RP03157 **Recombinant**

Sequence Information

Species	Gene ID	Swiss Prot
Human	10894	Q9Y5Y7

Tags

C-His

Synonyms

Lymphatic Vessel Endothelial Hyaluronic Acid Receptor 1; LYVE-1; Cell Surface Retention Sequence-Binding Protein 1; CRSBP-1; Extracellular Link Domain-Containing Protein 1; Hyaluronic Acid Receptor; LYVE1; CRSBP1; HAR; XLKD1

Product Information

Source	Purification
HEK293 cells	> 95% by SDS-PAGE.

Endotoxin

< 1.0 EU/μg of the protein by LAL method.

Formulation

Lyophilized from a 0.22 μm filtered solution of 20 mM Tris-Citrate, 150 mM NaCl, pH 7.0. Contact us for customized product form or formulation.

Reconstitution

Centrifuge the vial before opening. Reconstitute to a concentration of 0.1-0.5 mg/mL in sterile distilled water. Avoid vortex or vigorously pipetting the protein. For long term storage, it is recommended to add a carrier protein or stabilizer (e.g. 0.1% BSA, 5% HSA, 10% FBS or 5% Trehalose), and aliquot the reconstituted protein solution to minimize free-thaw cycles.

Contact

 | 400-999-6126

 | cn.market@abclonal.com.cn

 | www.abclonal.com.cn

Background

Lymphatic Vessel Endothelial Hyaluronic Acid Receptor 1 is a single-pass type I membrane protein. LYVE-1 is a CD44 homolog found primarily on lymphatic endothelial cells 1. LYVE-1 mainly expressed in endothelial cells lining lymphatic vessels. While LYVE-1 functions is a Ligand-specific transporter trafficking between intracellular organelles (TGN) and the plasma membrane. LYVE-1 plays a role in autocrine regulation of cell growth mediated by growth regulators containing cell surface retention sequence binding (CRS). It may act as an hyaluronan (HA) transporter, either mediating its uptake for catabolism within lymphatic endothelial cells themselves, or its transport into the lumen of afferent lymphatic vessels for subsequent re-uptake and degradation in lymph nodes.

Basic Information

Description

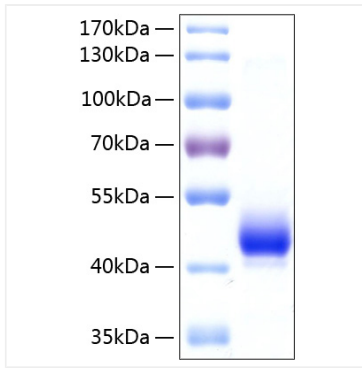
Recombinant Human LYVE-1 Protein is produced by HEK293 Cells expression system. The target protein is expressed with sequence (Leu20-Thr238) of human LYVE-1 (Accession #AAH26231.1) fused with His tag at the C-terminus.

Bio-Activity

Storage

Store the lyophilized protein at -20°C to -80 °C for long term. After reconstitution, the protein solution is stable at -20 °C for 3 months, at 2-8 °C for up to 1 week. Avoid repeated freeze/thaw cycles.

Validation Data



Recombinant Human LYVE-1 Protein was determined by SDS-PAGE with Coomassie Blue, showing a band at 45-50 kDa.