

Recombinant Mouse GDF15 Protein

Catalog No.: RP03177 **Recombinant**

Sequence Information

| Species | Gene ID | Swiss Prot |
|---------|---------|------------|
| Mouse | 23886 | Q9Z0J7 |

Tags

N-hFc

Synonyms

GDF-15; MIC-1; NAG-1; PDF; PLAB;
PTGFB; GDF15; MIC1; RG-1; Placental
TGF-beta; PTGF-beta; PTGFBPTGF-beta

Product Information

| Source | Purification |
|--------------|--------------------------------------|
| HEK293 cells | > 95% as determined by Tris-Bis PAGE |

| Calculated MW | Observed MW |
|---------------|-------------|
| 37.9 kDa | 40-50 kDa |

Endotoxin

Less than 1EU per µg by the LAL method.

Formulation

Lyophilized from a 0.22 µm filtered solution of PBS, pH 7.4. Contact us for customized product form or formulation.

Reconstitution

Centrifuge the tube before opening. Reconstitute to a concentration of 0.1-0.5 mg/mL in sterile distilled water. Avoid vortex or vigorously pipetting the protein. For long term storage, it is recommended to add a carrier protein or stabilizer (e.g. 0.1% BSA, 5% HSA, 10% FBS or 5% Trehalose), and aliquot the reconstituted protein solution to minimize free-thaw cycles.

Contact

☎ | 400-999-6126

✉ | cn.market@abclonal.com.cn

🌐 | www.abclonal.com.cn

Background

Growth Differentiation Factor 15 (GDF15), also known as NSAID activated gene-1 (NAG-1), is associated with a large number of biological processes and diseases, including cancer and obesity. GDF15 is synthesized as pro-GDF15, is dimerized, and is cleaved and secreted into the circulation as a mature dimer GDF15.

Basic Information

Description

Recombinant Mouse GDF15 Protein is produced by Human cells expression system. The target protein is expressed with sequence (Ser189-Ala303) of mouse GDF15 (Accession #Q9Z0J7) fused with a hFc tag at the N-terminus.

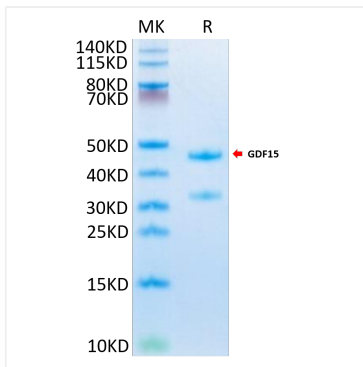
Bio-Activity

Immobilized Mouse GFRAL, His Tag at 2 µg/mL (100µL/well) on the plate. Dose response curve for Mouse GDF15, hFc Tag with the EC₅₀ of 3.0 ng/mL determined by ELISA.

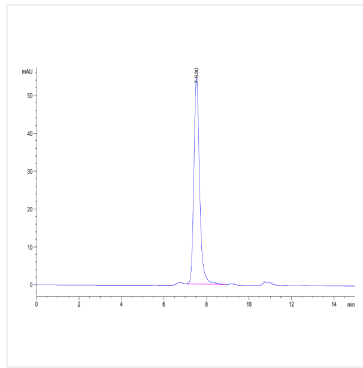
Storage

Store at -20°C. Store the lyophilized protein at -20°C to -80 °C up to 1 year from the date of receipt. After reconstitution, the protein solution is stable at -20°C for 3 months, at 2-8°C for up to 1 week. Avoid repeated freeze/thaw cycles.

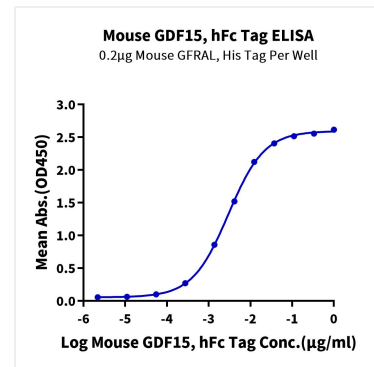
Validation Data



Recombinant Mouse GDF15 Protein was determined by SDS-PAGE with Coomassie Blue, showing a band at 40-50 kDa.



The purity of Mouse GDF15 is greater than 95% as determined by SEC-HPLC.



Immobilized Mouse GFRAL, His Tag at 2 µg/mL (100µL/well) on the plate. Dose response curve for Mouse GDF15, hFc Tag with the EC₅₀ of 3.0 ng/mL determined by ELISA.