

Recombinant Human Peptide Ready HLA-A*24:02&B2M Monomer Protein

Catalog No.: RP03187 **Recombinant**

Sequence Information

| Species | Gene ID | Swiss Prot |
|---------|------------|---------------------|
| Human | 3105 & 567 | AAA59600.1 & P61769 |

Tags

C-His&Avi tag

Synonyms

MHC; HLA-A; Peptide Ready

Product Information

| Source | Purification |
|--------------|----------------------------------|
| HEK293 cells | > 95% by Tris-Bis PAGE and HPLC. |

Endotoxin

< 1.0 EU/μg of the protein by LAL method.

Formulation

Lyophilized from 0.22 μm filtered solution in PBS (pH 7.4). Normally 8% trehalose is added as protectant before lyophilization. Contact us for customized product form or formulation.

Reconstitution

Centrifuge the vial before opening. Reconstitute to a concentration of 0.1-0.5 mg/mL in sterile distilled water. Avoid vortex or vigorously pipetting the protein. For long term storage, it is recommended to add a carrier protein or stabilizer (e.g. 0.1% BSA, 5% HSA, 10% FBS or 5% Trehalose), and aliquot the reconstituted protein solution to minimize free-thaw cycles.

Contact

☎ | 400-999-6126

✉ | cn.market@abclonal.com.cn

🌐 | www.abclonal.com.cn

Background

Peptide Ready HLA-G&B2M Monomer is absent from peptide, namely peptide-receptive MHC. It can be loaded with antigenic peptides matching HLA-G. Peptide ready MHC molecules comprising human HLA alleles and B2M, which can be readily tetramerized and loaded with peptides of choice in a high-throughput manner.

Basic Information

Description

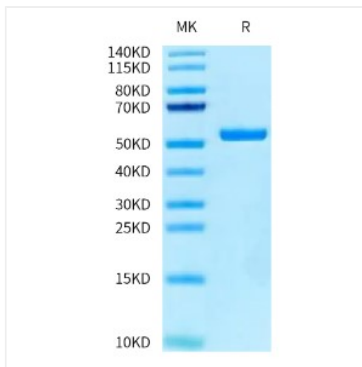
Recombinant Human Peptide Ready HLA-A*24:02&B2M Monomer Protein is expressed from HEK293 with His tag and Avi tag at the C-Terminus. It contains Gly25-Thr305 (HLA-A*24:02) and Ile21-Met119 (B2M). [Accession | AAA59600.1 (HLA-A*24:02) & P61769 (B2M)]

Bio-Activity

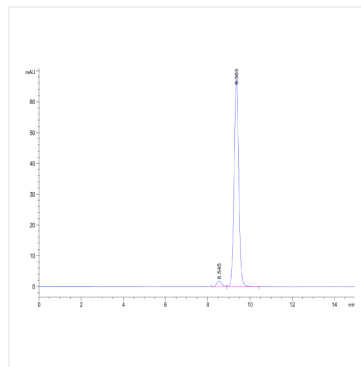
Storage

Store the lyophilized protein at -20°C to -80 °C for long term. After reconstitution, the protein solution is stable at -20 °C for 3 months, at 2-8 °C for up to 1 week. Avoid repeated freeze/thaw cycles.

Validation Data



Recombinant Human Peptide Ready HLA-A 24:02&B2M Monomer on Tris-Bis PAGE under reduced condition. The purity is greater than 95%.



The purity of Recombinant Human Peptide Ready HLA-A 24:02&B2M Monomer is greater than 95% as determined by SEC-HPLC.