

Recombinant Human SPINK1 Protein

Catalog No.: RP03188LQ **Recombinant**

Sequence Information

Species	Gene ID	Swiss Prot
Human	6690	P00995

Tags

C-His

Synonyms

Pancreatic Secretory Trypsin Inhibitor;
Serine Protease Inhibitor Kazal-Type 1;
Tumor-Associated Trypsin Inhibitor; TATI;
SPINK1; PSTI

Product Information

Source	Purification
HEK293 cells	> 95% by SDS-PAGE.

Calculated MW	Observed MW
7.28 KDa	12-16 KDa

Endotoxin

< 1 EU/μg of the protein by LAL method.

Formulation

Supplied as a 0.22 μm filtered solution in 20mM Tris-HCl, 500mM NaCl, 5% Trehalose, 5% Mannitol, 0.02% Tween 80, pH 9.0. Contact us for customized product form or formulation.

Reconstitution

Contact

 | 400-999-6126 | cn.market@abclonal.com.cn | www.abclonal.com.cn

Background

Serine Protease Inhibitor Kazal-Type 1 (SPINK1) is a trypsin inhibitor that prevent the trypsin-catalyzed premature activation of zymogens within the pancreas. Defects in SPINK1 are a cause of pancreatitis (PCTT). A disease characterized by the presence of calculi in pancreatic ducts. It causes severe abdominal pain attacks. Defects in SPINK1 are the cause of susceptibility to tropical calcific pancreatitis (TCP). Recombinant SPINK1 protein (rSPINK1) stimulated cell proliferation in benign RWPE as well as cancerous prostate cells. The research result indicated that the potential of SPINK1 as an extracellular therapeutic target in prostate cancer. In contrast, knockdown of SPINK1 in 22RV1 cells inhibited cell proliferation, cell invasion, and tumor growth in xenograft assays.

Basic Information

Description

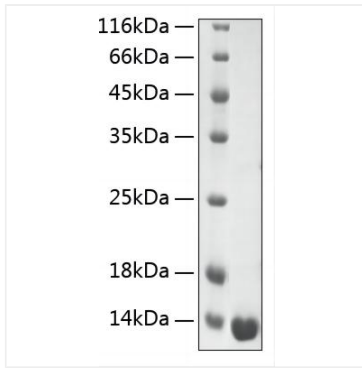
Recombinant Human SPINK1 Protein is produced by HEK293 cells expression system. The target protein is expressed with sequence (Asp24-Cys79) of Human SPINK1 (Accession #NP_003113.2) fused with His tag at the C-terminus.

Bio-Activity

Storage

Store at -70°C. This product is stable at ≤ -70°C for up to 1 year from the date of receipt. For optimal storage, aliquot into smaller quantities after centrifugation and store at recommended temperature. Avoid repeated freeze-thaw cycles. Avoid repeated freeze/thaw cycles.

Validation Data



Recombinant Human SPINK1 Protein was determined by SDS-PAGE with Coomassie Blue, showing a band at 12-14 kDa.