

**Catalog No.: RP03204LQ** **Recombinant**

Species	Gene ID	Swiss Prot
Human	5547	P42785

## C-His

Lysosomal Pro-X Carboxypeptidase;  
Angiotensinase C; Lysosomal  
Carboxypeptidase C; Proline  
Carboxypeptidase;  
Prolylcarboxypeptidase; PRCP; PRCP; PCP

<b>Source</b>	<b>Purification</b>
HEK293 cells	≥ 95 % as determined by SDS-PAGE.

Calculated MW	Observed MW
54.5 KDa	60-90 KDa


< 1 EU/μg of the protein by LAL method.

Supplied as a 0.2  $\mu$ m filtered solution of 20mM NaAc-HAc, 150mM NaCl, 10% Glycerol, pH4.5.

## Contact

 | 400-999-6126

✉ | [cn.market@abclonal.com.cn](mailto:cn.market@abclonal.com.cn)

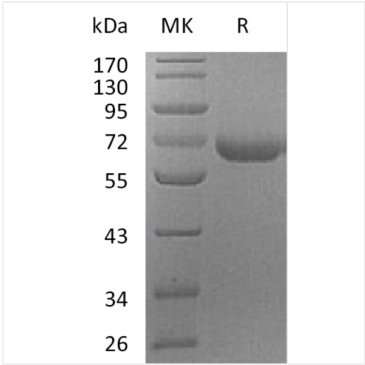
 | [www.abclonal.com.cn](http://www.abclonal.com.cn)

Lysosomal Pro-X Carboxypeptidase (PRCP) belongs to the peptidase S28 family. PRCP is detected in many tissues, with highest levels observed in placenta, lung, and liver. It is also present in the heart, brain, pancreas, and kidney. PRCP exists as a homodimer. PRCP cleaves C-terminal amino acids linked to proline in peptides such as angiotensin II, III and des-Arg9-bradykinin. This cleavage occurs at acidic pH, but enzymatic activity is retained with some substrates at neutral pH. PRCP has been shown to be an activator of the cell matrix-associated prekallikrein.

Recombinant Human PRCP Protein is produced by HEK293 cells expression system. The target protein is expressed with sequence (Leu22-His496) of Human PRCP (Accession #NP\_005031.1) fused with 6×His tag at the C-terminus.

Store at -70°C. This product is stable at  $\leq -70^{\circ}\text{C}$  for up to 1 year from the date of receipt. For optimal storage, aliquot into smaller quantities after centrifugation and store at recommended temperature. Avoid repeated freeze-thaw cycles.

Validation Data



Recombinant Human PRCP Protein was determined by SDS-PAGE under reducing conditions with Coomassie Blue.