

**Catalog No.: RP03208** **Recombinant**

Species	Gene ID	Swiss Prot
Human	55748	O96KP4

## C-His

CN2; CPGL; HEL-S-13; HsT2298; PEPA;  
Cytosolic non-specific dipeptidase;  
Glutamate carboxypeptidase-like protein  
1; CNDP2

<b>Source</b>	<b>Purification</b>
Baculovirus-Insect Cells	≥ 95 % as determined by SDS-PAGE

## 54.2 kDa                      50-60 kDa

< 1 EU/μg of the protein by LAL method.

Lyophilized from sterile 50 mM Tris, 100 mM NaCl, 0.5 mM PMSF, pH 8.0. Please contact us for any concerns or special requirements.

Centrifuge the vial before opening. Reconstitute to a concentration of 0.1-0.5 mg/mL in sterile distilled water. Avoid vortex or vigorously pipetting the protein. For long term storage, it is recommended to add a carrier protein or stabilizer (e.g. 0.1% BSA, 5% HSA, 10% FBS or 5% Trehalose), and aliquot the reconstituted protein solution to minimize free-thaw cycles.

 | 400-999-6126

 | [cn.market@abclonal.com.cn](mailto:cn.market@abclonal.com.cn)

 | [www.abclonal.com.cn](http://www.abclonal.com.cn)

Cytosolic non-specific dipeptidase, also known as CNDP dipeptidase 2, Glutamate carboxypeptidase-like protein 1, Peptidase A, CNDP2 and CN2, is a cytoplasm protein which belongs to the peptidase M2A family. CNDP2 / CPGL is a cytosolic enzyme that can hydrolyze carnosine to yield L-histidine and beta-alanine. CNDP2 / CPGL hydrolyzes a variety of dipeptides including L-carnosine but has a strong preference for Cys-Gly. It may play a role as tumor suppressor in hepatocellular carcinoma (HCC) cells. Isoform1 of CNDP2 / CPGL is ubiquitously expressed with higher levels in kidney and liver (at protein level). Isoform2 of CNDP2 / CPGL is expressed in fetal tissues, it is only expressed in adult liver and placental tissues. CNDP2 / CPGL is highly expressed in the histaminergic neurons in the tuberomammillary nucleus, implying that it may supply histidine to histaminergic neurons for histamine synthesis.

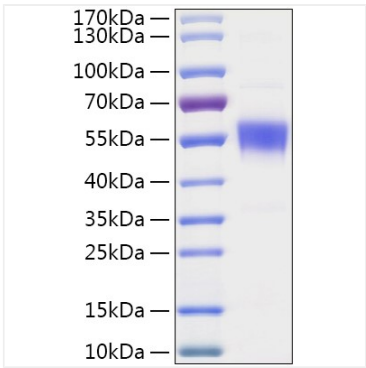
Recombinant Human CNBP2 Protein is produced by Baculovirus-Insect Cells expression system. The target protein is expressed with sequence (Met1-Asp475) of Human CNBP2 (Accession #CAC69883.1) fused with a His tag at the C-terminus.

Store at -20°C. Store the lyophilized protein at -20°C to -80 °C up to 1 year from the date of receipt.

After reconstitution, the protein solution is stable at -20°C for 3 months, at 2-8°C for up to 1 week.

Avoid repeated freeze/thaw cycles.

Validation Data



Recombinant Human CNDP2 Protein was determined by SDS-PAGE under reducing conditions with Coomassie Blue.