

# Recombinant Human CYP3A4 Protein

Catalog No.: RP03212 **Recombinant**

## Sequence Information

Species	Gene ID	Swiss Prot
Human	1576	P08684

### Tags

N-His

### Synonyms

Cytochrome P450 3A4; CYP3A4; CYP3A3

## Product Information

Source	Purification
<i>E. coli</i>	> 90% by SDS-PAGE.

Calculated MW	Observed MW
59.2 kDa.	

### Endotoxin

Please contact us for more information.

### Formulation

Lyophilized from a 0.22  $\mu$ m filtered solution of 50 mM Tris 1/1000 CHAPS. Contact us for customized product form or formulation.

### Reconstitution

Centrifuge the vial before opening. Reconstitute to a concentration of 0.1-0.5 mg/mL in sterile distilled water. Avoid vortex or vigorously pipetting the protein. For long term storage, it is recommended to add a carrier protein or stabilizer (e.g. 0.1% BSA, 5% HSA, 10% FBS or 5% Trehalose), and aliquot the reconstituted protein solution to minimize free-thaw cycles.

## Contact

 | 400-999-6126

 | [cn.market@abclonal.com.cn](mailto:cn.market@abclonal.com.cn)

 | [www.abclonal.com.cn](http://www.abclonal.com.cn)

## Background

CYP3A4 is an important member of the cytochrome P450 enzyme superfamily, with 33 allelic variants. Human cytochrome P450 3A4 (CYP3A4) is an important drug metabolizing enzyme involved in a number of drug-drug and food-drug interactions. Systemic inflammation has been linked to suppressed CYP3A4 activity.

## Basic Information

### Description

Recombinant Human CYP3A4 Protein is produced by *E. coli* expression system. The target protein is expressed with sequence (Met1-Lys505) of human CYP3A4 (Accession #NP\_059488.2) fused with His tag at the N-terminus.

### Bio-Activity

#### Storage

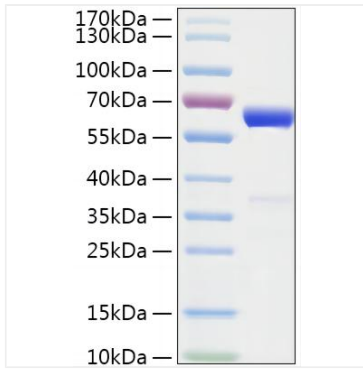
Store at -20°C. Store the lyophilized protein at -20°C to -80 °C up to 1 year from the date of receipt.

After reconstitution, the protein solution is stable at -20°C for 3 months, at 2-8°C for up to 1 week.

Avoid repeated freeze/thaw cycles.

## Validation Data

---



Recombinant Human CYP3A4 Protein was determined by SDS-PAGE with Coomassie Blue, showing a band at 60 kDa.