

Recombinant Human MFG-E8 Protein

Catalog No.: RP03233 **Recombinant**

Sequence Information

Species	Gene ID	Swiss Prot
Human	4240	Q08431-1

Tags

C-His

Synonyms

P47;MP47;Mfgm;SED1;MFG-E8;AA408458;AI325141;lactadherin;MFG E8

Product Information

Source	Purification
Baculovirus-Insect Cells	> 85% by SDS-PAGE.

Endotoxin

< 1 EU/μg of the protein by LAL method.

Formulation

Lyophilized from a 0.22 μm filtered solution of 20mM Tris, 500mM NaCl, pH 7.4, 10% gly. Contact us for customized product form or formulation.

Reconstitution

Centrifuge the vial before opening. Reconstitute to a concentration of 0.1-0.5 mg/mL in sterile distilled water. Avoid vortex or vigorously pipetting the protein. For long term storage, it is recommended to add a carrier protein or stabilizer (e.g. 0.1% BSA, 5% HSA, 10% FBS or 5% Trehalose), and aliquot the reconstituted protein solution to minimize free-thaw cycles.

Contact

 | 400-999-6126 | cn.market@abclonal.com.cn | www.abclonal.com.cn

Background

MFG-E8, also known as lactadherin and MFGE8, contains 1 EGF-like domain and 2 F5/8 type C domains. It also contains phosphatidylserine (PS) binding domain, as well as an Arginine-Glycine-Aspartic acid motif, which enables the binding to integrins. It binds PS, which is exposed on the surface of apoptotic cells. MFG-E8 is expressed in mammary epithelial cell surfaces and aortic media. Overexpression of MFG-E8 can be found in several carcinomas. MFG-E8 has opsonization of the apoptotic cells and binding to integrins on the surface of phagocytic cells. It also mediates the engulfment of the dead cell. MFG-E8 plays an important role in the maintenance of intestinal epithelial homeostasis and the promotion of mucosal healing. It promotes VEGF-dependent neovascularization and contributes to the phagocytic removal of apoptotic cells in many tissues. It also binds to phosphatidylserine-enriched cell surfaces in a receptor-independent manner.

Basic Information

Description

Recombinant Human MFG-E8 Protein is produced by Baculovirus-Insect Cells expression system. The target protein is expressed with sequence (Leu24-Cys387) of Human MFGE8/BA46 (Accession #NP_005919.2) fused with a 6xHis tag at the C-terminus.

Bio-Activity

When 5 x 10E4 cells/well are added to Recombinant Human MFG-E8 coated plates (12.5 μg/mL, 100 μL/well), 45-85% cells will adhere after 1 hour at 37°C.

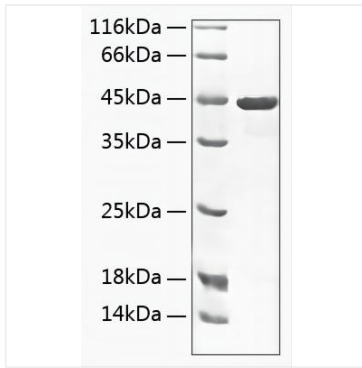
Storage

Store the lyophilized protein at -20°C to -80°C for 12 months.

After reconstitution, the protein solution is stable at -20°C for 3 months, at 2-8°C for up to 1 week.

Avoid repeated freeze/thaw cycles.

Validation Data



Recombinant Human MFG-E8 Protein was determined by SDS-PAGE with Coomassie Blue, showing a band at 45kDa.