

Recombinant Mouse CXCL3/GRO-gamma/MIP2-beta Protein

Catalog No.: RP03238LQ **Recombinant**

Sequence Information

Species	Gene ID	Swiss Prot
Mouse	330122	Q6W5C0

Tags

C-His

Synonyms

CXCL3;CINC-2b;GRO3;GROg;MIP-2b;MIP2 B;SCYB3

Product Information

Source	Purification
<i>Pichia</i>	> 95% by SDS-PAGE.

Endotoxin

Please contact us for more information.

Formulation

Supplied as a 0.22 µm filtered solution in PBS, 50 % Glycerol, pH 7.4. Contact us for customized product form or formulation.

Reconstitution

Background

CXCL3 is involved in migration, invasion, proliferation and tubule formation of trophoblasts and may play a key role in the pathogenesis of preeclampsia. CXCL3 autocrine/paracrine pathways are involved in the development of prostate cancer by regulating the expression of the target genes that are related to the progression of malignancies. CXCL3 is a novel adipokine that facilitates adipogenesis in an autocrine and/or a paracrine manner through induction of *c/ebpb* and *c/ebpd*. CXCL3 and its receptor CXCR2 are overexpressed in prostate cancer cells, prostate epithelial cells and prostate cancer tissues, which may play multiple roles in prostate cancer progression and metastasis.

Basic Information

Description

Recombinant Mouse CXCL3/GRO-gamma/MIP2-beta Protein is produced by *Pichia* expression system. The target protein is expressed with sequence (Ala28-Ser100) of Mouse CXCL3/GRO gamma (Accession #NP_976065.1) fused with a 6xHis tag at the C-terminus.

Bio-Activity

Storage

Store at ≤-70°C, stable for 6 months after receipt. Store at ≤-70°C, stable for 3 months under sterile conditions after opening. Please minimize freeze-thaw cycles. Avoid repeated freeze/thaw cycles.

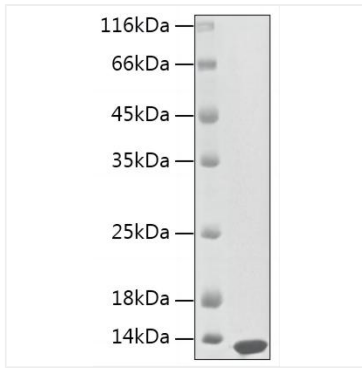
Contact

☎ | 400-999-6126

✉ | cn.market@abclonal.com.cn

🌐 | www.abclonal.com.cn

Validation Data



Recombinant Mouse CXCL3/GRO-gamma/MIP2-beta Protein was determined by SDS-PAGE with Coomassie Blue, showing a band at 10kDa.