

# Recombinant Mouse EGFR/HER1 Protein

Catalog No.: RP03240 **Recombinant**

## Sequence Information

Species	Gene ID	Swiss Prot
Mouse	13649	Q01279

### Tags

C-His

### Synonyms

ErbB; EGFR; mENA; LEGFR; ERBB;  
ERBB1; HER1; PIG61; NISBD2

## Product Information

Source	Purification
HEK293 cells	> 95% by Tris-Bis PAGE and HPLC.

### Endotoxin

< 1.0 EU/μg of the protein by LAL  
method.

### Formulation

Lyophilized from a 0.22 μm filtered  
solution of PBS, pH 7.4. Contact us for  
customized product form or formulation.

### Reconstitution

Centrifuge the vial before opening.  
Reconstitute to a concentration of  
0.1-0.5 mg/mL in sterile distilled water.  
Avoid vortex or vigorously pipetting the  
protein. For long term storage, it is  
recommended to add a carrier protein or  
stabilizer (e.g. 0.1% BSA, 5% HSA, 10%  
FBS or 5% Trehalose), and aliquot the  
reconstituted protein solution to  
minimize free-thaw cycles.

## Background

The epidermal growth factor receptor is a transmembrane protein that is a receptor for members of the epidermal growth factor family of extracellular protein ligands. The epidermal growth factor receptor is a member of the ErbB family of receptors, a subfamily of four closely related receptor tyrosine kinases: EGFR, HER2/neu, Her 3 and Her 4. Receptor tyrosine kinase binding ligands of the EGF family and activating several signaling cascades to convert extracellular cues into appropriate cellular responses.

## Basic Information

### Description

Recombinant Mouse EGFR/HER1 Protein is produced by HEK293 cells expression system. The target protein is expressed with sequence (Leu25-Ser647) of Mouse EGFR/HER1 (Accession #Q01279) fused with His tag at the C-terminus.

### Bio-Activity

Recombinant Mouse EGFR/HER1 Protein captured on CM5 Chip via anti-his antibody can bind Mouse EGF, hFc Tag with an affinity constant of 9.96 nM as determined in SPR assay (Biacore T200).

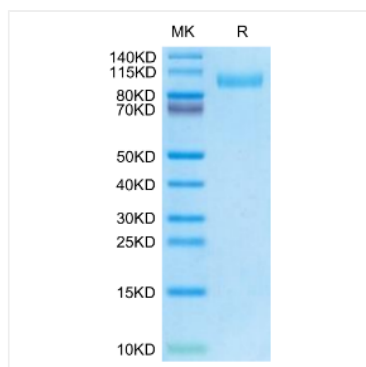
### Storage

Store the lyophilized protein at -20°C to -80°C for 12 months.  
After reconstitution, the protein solution is stable at -20°C for 3 months, at 2-8°C for up to 1 week.  
Avoid repeated freeze/thaw cycles.

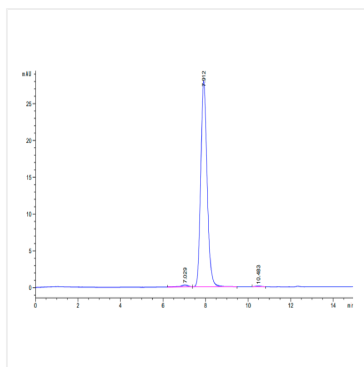
## Contact

 | 400-999-6126 | [cn.market@abclonal.com.cn](mailto:cn.market@abclonal.com.cn) | [www.abclonal.com.cn](http://www.abclonal.com.cn)

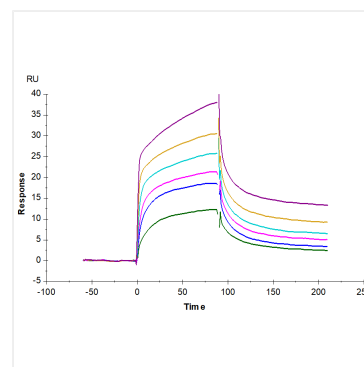
## Validation Data



Recombinant Mouse EGFR/HER1 Protein was determined by SDS-PAGE with Coomassie Blue, showing a band at 90-110 kDa.



The purity of Mouse EGFR is greater than 95% as determined by SEC-HPLC.



Recombinant Mouse EGFR/HER1 Protein captured on CM5 Chip via anti-his antibody can bind Mouse EGF, hFc Tag with an affinity constant of 9.96 nM as determined in SPR assay (Biacore T200).