

Recombinant Human TCL1A Protein

Catalog No.: RP03248 **Recombinant**

Sequence Information

Species	Gene ID	Swiss Prot
Human	8115	P56279

Tags

N-His

Synonyms

T-cell leukemia/lymphoma protein 1A;
TCL1; TCL1A

Product Information

Source	Purification
E.coli	> 88% by SDS-PAGE.

Endotoxin

Please contact us for more information.

Formulation

Lyophilized from a 0.22 µm filtered solution of PBS, pH 7.5. Contact us for customized product form or formulation.

Reconstitution

Centrifuge the vial before opening.
Reconstitute to a concentration of 0.1-0.5 mg/mL in sterile distilled water.
Avoid vortex or vigorously pipetting the protein. For long term storage, it is recommended to add a carrier protein or stabilizer (e.g. 0.1% BSA, 5% HSA, 10% FBS or 5% Trehalose), and aliquot the reconstituted protein solution to minimize free-thaw cycles.

Contact

☎	400-999-6126
✉	cn.market@abclonal.com.cn
🌐	www.abclonal.com.cn

Background

TCL1A is a member of the TCL1 family. TCL1 protooncogene is expressed in CD3-CD4-CD8- precursor T cells and is extinguished at the CD4+CD8+ stage of thymocyte development. In B cells, TCL1 is first expressed in pro-B cells and remains high in naive mantle zone B cells of peripheral lymphoid tissues. The TCL1 protooncogene is overexpressed in many mature B cell lymphomas, especially from AIDS patients. It has been demonstrated that TCL1 is a powerful oncogene that, when overexpressed in both B and T cells, predominantly yields mature B cell lymphomas. All TCL1 isoforms bind to the Akt pleckstrin homology domain.

Basic Information

Description

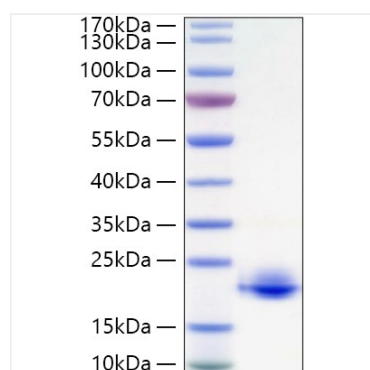
Recombinant Human TCL1A Protein is produced by E.coli expression system. The target protein is expressed with sequence (Ala2-Asp114) of human TCL1A (Accession #P56279) fused with His tag at the N-terminus.

Bio-Activity

Storage

Store the lyophilized protein at -20°C to -80°C for 12 months.
After reconstitution, the protein solution is stable at -20°C for 3 months, at 2-8°C for up to 1 week.
Avoid repeated freeze/thaw cycles.

Validation Data



Recombinant Human TCL1A Protein was determined by SDS-PAGE with Coomassie Blue, showing a band at 20-25 kDa.