

Recombinant Human Complement factor B/CFB Protein

Catalog No.: RP03251LQ **Recombinant**

Sequence Information

Species	Gene ID	Swiss Prot
Human	629	P00751

Tags

C-His

Synonyms

Complement Factor B; C3/C5
Convertase; Glycine-Rich Beta
Glycoprotein; GBG; PBF2; Properdin
Factor B; CFB; BF; BFD

Product Information

Source	Purification
HEK293 cells	> 95% by SDS- PAGE.

Calculated MW	Observed MW
84.07 kDa	90-120 kDa

Endotoxin

< 1.0 EU/μg of the protein by LAL
method.

Formulation

Supplied as a 0.22 μm filtered solution of
20 mM Tris-HCl, 150 mM NaCl, pH 8.0.
Contact us for customized product form
or formulation.

Reconstitution

Please contact us for reconstitution
instructions.

Contact

 | 400-999-6126

 | cn.market@abclonal.com.cn

 | www.abclonal.com.cn

Background

Complement Factor B (CFB) belongs to the peptidase S1 family of enzymes. It is expressed by hepatocytes and macrophages and localizes to the major histocompatibility complex (MHC) class III region on chromosome 6. CFB which is a component of the alternate pathway of the complement system is cleaved by factor D into 2 fragments: Ba and Bb. Bb. The active subunit Bb is a serine protease which associates with C3b to form the alternative pathway C3 convertase. Bb is involved in the proliferation of preactivated B lymphocytes, while Ba inhibits their proliferation.

Basic Information

Description

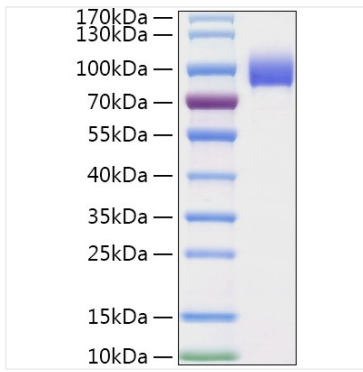
Recombinant Human Complement factor B/CFB Protein is produced by Mammalian expression system. The target protein is expressed with sequence (Thr26-Leu764) of Human Complement factor B/CFB (Accession #AAH04143.1) fused with His tag at the C-terminus.

Bio-Activity

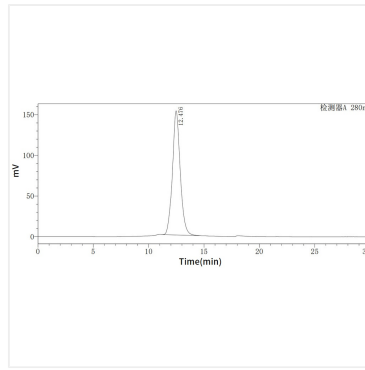
Storage

Store at -70°C. This product is stable at ≤ -70°C for up to 1 year from the date of receipt. For optimal storage, aliquot into smaller quantities after centrifugation and store at recommended temperature. Avoid repeated freeze-thaw cycles. Avoid repeated freeze/thaw cycles.

Validation Data



Recombinant Human CFB Protein was determined by SDS-PAGE with Coomassie Blue, showing a band at 90-120 kDa.



The purity of Human CFB is greater than 95% as determined by SEC-HPLC.