

Recombinant Human Annexin A1/ANXA1 Protein

Catalog No.: RP03265 **Recombinant**

Sequence Information

Species	Gene ID	Swiss Prot
Human	301	P04083

Tags

C-His

Synonyms

Annexin I; Calpactin II; Calpactin-2;
Chromobindin-9; Lipocortin I; p35; ANX1;
LPC1; Annexin A1; Annexin-1; ANXA1

Product Information

Source	Purification
E.coli	> 95% by Tris-Bis PAGE.

Endotoxin

< 1.0 EU/μg of the protein by LAL
method.

Formulation

Lyophilized from a 0.22 μm filtered
solution of PBS, pH 7.4. Contact us for
customized product form or formulation.

Reconstitution

Centrifuge the vial before opening.
Reconstitute to a concentration of
0.1-0.5 mg/mL in sterile distilled water.
Avoid vortex or vigorously pipetting the
protein. For long term storage, it is
recommended to add a carrier protein or
stabilizer (e.g. 0.1% BSA, 5% HSA, 10%
FBS or 5% Trehalose), and aliquot the
reconstituted protein solution to
minimize free-thaw cycles.

Contact

☎ | 400-999-6126

✉ | cn.market@abclonal.com.cn

🌐 | www.abclonal.com.cn

Background

Atherosclerosis, characterized by the formation of fat-laden plaques, is a chronic inflammatory disease. ABCA1 promotes cholesterol efflux, reduces cellular cholesterol accumulation, and regulates anti-inflammatory activities in an apoA-I- or ANXA1-dependent manner. The latter activity occurs by mediating the efflux of ANXA1, which plays a critical role in anti-inflammatory effects, cholesterol transport, exosome and microparticle secretion, and apoptotic cell clearance.

Basic Information

Description

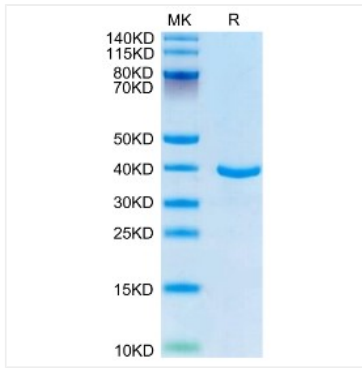
Recombinant Human ANXA1 Protein is produced by E.coli expression system. The target protein is expressed with sequence (Met1-Asn346) of human ANXA1 (Accession #P04083) fused with His tag at the C-terminus.

Bio-Activity

Storage

Store at -20°C. Store the lyophilized protein at -20°C to -80 °C up to 1 year from the date of receipt.
After reconstitution, the protein solution is stable at -20°C for 3 months, at 2-8°C for up to 1 week.
Avoid repeated freeze/thaw cycles.

Validation Data



Recombinant Human Annexin A1/ANXA1 Protein was determined by SDS-PAGE with Coomassie Blue, showing a band at 35-40 kDa.