

Recombinant Mouse CCL20/MIP-3-alpha Protein

Catalog No.: RP03272 **Recombinant**

Sequence Information

Species	Gene ID	Swiss Prot
Mouse	20297	O89093

Tags

No tag

Synonyms

C-C motif chemokine 20; CCL20; MIP-3-alpha; MIP-3A; Larc; Scya20; ST38; CKb4

Product Information

Source	Purification
E.coli	> 95% by SDS-PAGE.

Calculated MW	Observed MW
8.1 kDa	8-14 kDa

Endotoxin

Please contact us for more information.

Formulation

Lyophilized from a 0.22 µm filtered solution of PBS, pH 7.4. Contact us for customized product form or formulation.

Reconstitution

Centrifuge the vial before opening. Reconstitute to a concentration of 0.1-0.5 mg/mL in sterile distilled water. Avoid vortex or vigorously pipetting the protein. For long term storage, it is recommended to add a carrier protein or stabilizer (e.g. 0.1% BSA, 5% HSA, 10% FBS or 5% Trehalose), and aliquot the reconstituted protein solution to minimize free-thaw cycles.

Contact

☎ | 400-999-6126

✉ | cn.market@abclonal.com.cn

🌐 | www.abclonal.com.cn

Background

Chemokine (C-C motif) ligand 2 (CCL2) or liver activation regulated chemokine (LARC) or Macrophage Inflammatory Protein-3 (MIP3A) is a small cytokine belonging to the CC chemokine family that attracts immature dendritic cells and memory T lymphocytes, both expressing CCR6. Depending on the cell type, this chemokine was found to be inducible by cytokines (IL-1beta) and by bacterial, viral, or plant products (including LPS, dsRNA, and PMA). MIP3A / CCL2 is Expressed predominantly in the liver, lymph nodes, appendix, peripheral blood lymphocytes, and fetal lung. Low levels of MIP3A / CCL2 has been seen in thymus, prostate, testis, small intestine and colon. As a chemotactic factor, MIP3A / CCL2 attracts lymphocytes and, slightly, neutrophils, but not monocytes. This chemokine may inhibit proliferation of myeloid progenitors in colony formation assays and it may be involved in formation and function of the mucosal lymphoid tissues by attracting lymphocytes and dendritic cells towards epithelial cells. Its C-terminal processed forms have been shown to be equally chemotactically active for leukocytes. Chemokine CCL2 was shown to play a role in colorectal cancer (CRC) pathogenesis.

Basic Information

Description

Recombinant Mouse CCL20/MIP-3-alpha Protein is produced by *E. coli* expression system. The target protein is expressed with sequence(Ala28-Met97) of Mouse CCL20/MIP-3-alpha (Accession #NP_058656.1) fused with No tag.

Bio-Activity

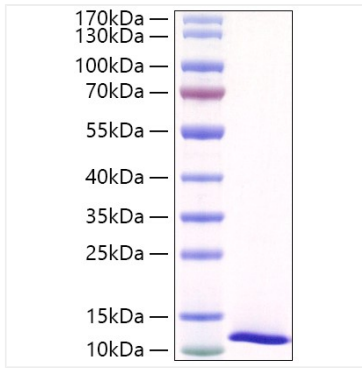
Storage

Store at -20°C. Store the lyophilized protein at -20°C to -80 °C up to 1 year from the date of receipt.

After reconstitution, the protein solution is stable at -20°C for 3 months, at 2-8°C for up to 1 week.

Avoid repeated freeze/thaw cycles.

Validation Data



Recombinant Mouse CCL20/MIP-3A Protein was determined by SDS-PAGE with Coomassie Blue, showing a band at approximately 8-14 kDa.