

Recombinant Human Sortilin/SORT1 Protein

Catalog No.: RP03274LQ **Recombinant**

Sequence Information

Species	Gene ID	Swiss Prot
Human	6272	Q99523-1

Tags

C-His

Synonyms

Sortilin; SORT1; Glycoprotein 95; Gp95; Neurotensin receptor 3; NT3; NTR3

Product Information

Source	Purification
HEK293 cells	> 95% by SDS-PAGE.

Calculated MW	Observed MW
77.2 kDa	85-95 kDa

Endotoxin

< 1.0 EU/μg of the protein by LAL method.

Formulation

Supplied as a 0.22 μm filtered solution in PBS, pH 7.4. Contact us for customized product form or formulation.

Reconstitution

Background

The Sortilin is a sorting receptor in the Golgi compartment and as a clearance receptor on the cell surface. Required for protein transport from the Golgi apparatus to the lysosomes by a pathway that is independent of the mannose-6-phosphate receptor (M6PR). Lysosomal proteins bind specifically to the receptor in the Golgi apparatus and the resulting receptor-ligand complex is transported to an acidic prelysosomal compartment where the low pH mediates the dissociation of the complex. The receptor is then recycled back to the Golgi for another round of trafficking through its binding to the retromer.

Basic Information

Description

Recombinant Human Sortilin/SORT1 Protein is produced by HEK293 cells expression system. The target protein is expressed with sequence (Ser78-Asn755) of human Sortilin/SORT1 (Accession #Q99523-1) fused with His tag at the C-terminus.

Bio-Activity

Immobilized Recombinant Human Sortilin/SORT1 Protein at 2 μg/mL (100 μL/well) can bind biotinylated Recombinant Human Progranulin Protein, the EC₅₀ is 500-1500 ng/mL.

Storage

Store at -20°C. Store the lyophilized protein at -20°C to -80 °C up to 1 year from the date of receipt.

After reconstitution, the protein solution is stable at -20°C for 3 months, at 2-8°C for up to 1 week.

Avoid repeated freeze/thaw cycles.

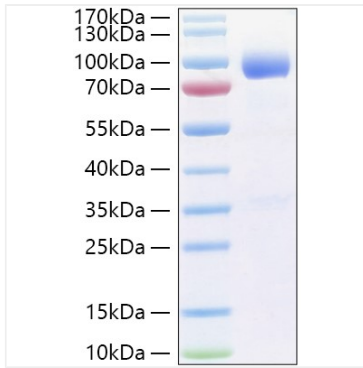
Contact

☎ | 400-999-6126

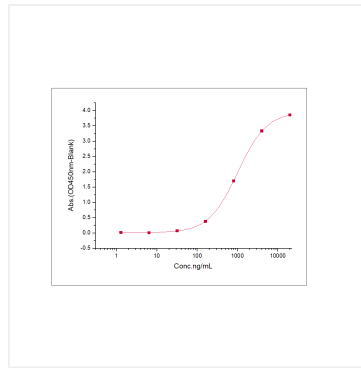
✉ | cn.market@abclonal.com.cn

🌐 | www.abclonal.com.cn

Validation Data



Recombinant Human Sortilin/SORT1 Protein was determined by SDS-PAGE with Coomassie Blue, showing a band at 85-95 KDa.



Immobilized Recombinant Human Sortilin/SORT1 Protein at 2 $\mu\text{g/mL}$ (100 $\mu\text{L/well}$) can bind biotinylated Recombinant Human Progranulin Protein, the EC_{50} is 500-1500 ng/mL.