

Recombinant Human Phospholipase A2/PLA2G1B Protein

Catalog No.: RP03277 **Recombinant**

Sequence Information

Species	Gene ID	Swiss Prot
Human	5319	P04054

Tags

C-His

Synonyms

Phospholipase A2; PLA2G1B; PLA2;
PLA2A; PPLA2

Product Information

Source	Purification
HEK293 cells	> 92% by SDS-PAGE.

Calculated MW	Observed MW
17.20 kDa	15-20 kDa

Endotoxin

< 1.0 EU/μg of the protein by LAL method.

Formulation

Lyophilized from a 0.22 μm filtered solution of 10 mM Tris, 5 mM CaCl₂, pH 8.0. Contact us for customized product form or formulation.

Reconstitution

Please contact us for reconstitution instructions.

Contact

☎ | 400-999-6126

✉ | cn.market@abclonal.com.cn

🌐 | www.abclonal.com.cn

Background

Phospholipase A2 (PLA2) plays crucial roles in diverse cellular responses, including phospholipid digestion and metabolism, host defense and signal transduction. PLA2 provides precursors for generation of eicosanoids, such as prostaglandins (PGs) and leukotrienes (LTs), when the cleaved fatty acid is arachidonic acid, platelet-activating factor (PAF) when the sn-1 position of the phosphatidylcholine contains an alkyl ether linkage and some bioactive lysophospholipids, such as lysophosphatidic acid (lysoPA).

Basic Information

Description

Recombinant Human Phospholipase A2/PLA2G1B Protein is produced by HEK293 cells expression system. The target protein is expressed with sequence (Met1-Ser148) of human Phospholipase A2/PLA2G1B (Accession #NP_000919.1) fused with His tag at the C-terminus.

Bio-Activity

Measured by its ability to hydrolyze 1-Hexadecanoyl-2-(1-pyrenedecanoyl)-sn-glycero-3-phosphomethanol. The specific activity is >2500 pmol/min/μg.

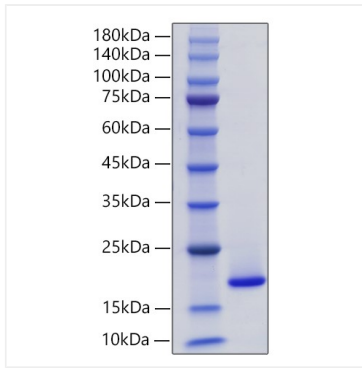
Storage

Store at -20°C. Store the lyophilized protein at -20°C to -80 °C up to 1 year from the date of receipt.

After reconstitution, the protein solution is stable at -20°C for 3 months, at 2-8°C for up to 1 week.

Avoid repeated freeze/thaw cycles.

Validation Data



Recombinant Human Phospholipase A2/PLA2G1B Protein was determined by SDS-PAGE with Coomassie Blue, showing a band at 15-20 kDa.