

**Catalog No.: RP03306LQ** **Recombinant**

Species	Gene ID	Swiss Prot
Human	5127&21977	Q00536&Q8
	1	ND76

N-GST (CDK16) & N-Flag (Cyclin Y)

CDK16; PCTAIRE1; PCTK1; Cyclin-dependent kinase 16; Cyclin Y; CCNY; C10orf9; CBCP1; CFP1; Cyclin-Y

<b>Source</b>	<b>Purification</b>
Baculovirus-Insect Cells	≥ 90 % as determined by SDS-PAGE; ≥ 90 % as determined by HPLC.

Calculated MW	Observed MW
82.3 kDa/41.3 kDa	65-85 kDa/25-40 kDa

< 1 EU/μg of the protein by LAL method.

Supplied as a 0.22 µm filtered solution in 50 mM HEPES, 200 mM NaCl, 5% glycerol. (pH 7.5). Contact us for customized product form or formulation.

Please use running water to thaw it quickly.

 | 400-999-6126

 | [cn.market@abclonal.com.cn](mailto:cn.market@abclonal.com.cn)

 | [www.abclonal.com.cn](http://www.abclonal.com.cn)

CDK16 is also known as PCTGAIRE, PCTAIRE1, and PCTK1, and belongs to the cyclin-dependent serine/threonine protein kinase family. CDK16 plays important roles in various cellular processes. It regulates cell cycle including G1, S, G2, and G2/M arrest and control cell cycle through interactions with other molecules or signaling pathways. It also plays a vital role in cell growth and proliferation, particularly in cancer cells. And CDK16 was also shown to participate in many cell death pathways, including apoptosis, necrosis, autophagy, and senescence. Cyclin Y has been identified as a CDK16 binding partner in human cells, including various cancers. The binding of CCNY to CDK16 is essential for spermatogenesis.

Recombinant Human CDK16&Cyclin Y Protein is produced by Baculovirus-Insect Cells expression system. The target protein is expressed with sequence (Met1-Phe496 (CDK16) & Met1-Ser341 (Cyclin Y)) of Human CDK16&CCNY (Accession #Q00536&Q8ND76) fused with a N-GST (CDK16) & N-Flag (Cyclin Y) tag.

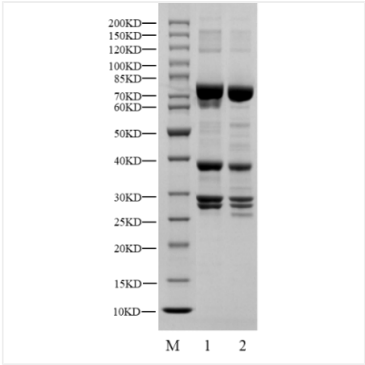
The activity of CDK16/Cyclin Y is based on the MSA technology, and the content and ratio of the substrate and the product are directly separated and detected in real time and dynamically by the different migration rates of the substrate and the product after the enzymatic reaction.

Store at -70°C. This product is stable at  $\leq -70^{\circ}\text{C}$  for up to 1 year from the date of receipt. For optimal storage, aliquot into smaller quantities after centrifugation and store at recommended temperature.

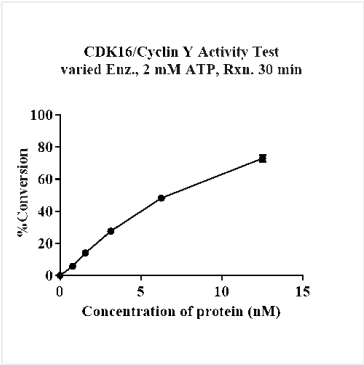
Aliquots below 10  $\mu$ L are not advisable. Product must not be stored in diluted solutions. Avoid repeated freeze-thaw cycles.

Avoid repeated freeze/thaw cycles.

Validation Data



Recombinant Human CDK16&Cyclin Y Kinase was determined by SDS-PAGE under reducing (R) and non-reducing (NR) conditions.



The activity of CDK16/Cyclin Y is based on the MSA technology, and the content and ratio of the substrate and the product are directly separated and detected in real time and dynamically by the different migration rates of the substrate and the product after the enzymatic reaction.