

Catalog No.: RP03349LQ **Recombinant**

Species	Gene ID	Swiss Prot
Human	5581	O02156

Tags
N-GST

Synonyms
PRKCE; PRKCE; nPKC-epsilon; Protein kinase C epsilon type

Source	Purification
Baculovirus-Insect Cells	≥ 90 % as determined by SDS-PAGE; ≥ 90 % as determined by HPLC.

Calculated MW	Observed MW
110.2 kDa	90-120 kDa

< 1 EU/μg of the protein by LAL method.

Supplied as a 0.22 µm filtered solution in 50 mM Tris-HCl, 150 mM NaCl, 5% glycerol, 5 mM DTT, 0.1 M Trehalose. (pH 7.5). Contact us for customized product form or formulation.

Please use running water to thaw it quickly.

 | 400-999-6126

 | cn.market@abclonal.com.cn

 | www.abclonal.com.cn

Protein kinase C epsilon type (PKCε) is an enzyme that in humans is encoded by the PRKCE gene. PKCε is an isoform of the large PKC family of protein kinases that play many roles in different tissues. In cardiac muscle cells, PKCε regulates muscle contraction through its actions at sarcomeric proteins, and PKCε modulates cardiac cell metabolism through its actions at mitochondria. PKCε is clinically significant in that it is a central player in cardioprotection against ischemic injury and in the development of cardiac hypertrophy.

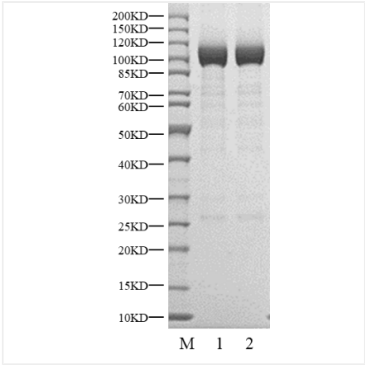
Recombinant Human PKC epsilon/PRKCE Protein is produced by Baculovirus-Insect Cells expression system. The target protein is expressed with sequence (Val2-Pro737) of Human PRKCE (Accession #Q02156) fused with a N-GST tag.

The activity of PRKCE is based on the MSA technology, and the content and ratio of the substrate and the product are directly separated and detected in real time and dynamically by the different migration rates of the substrate and the product after the enzymatic reaction.

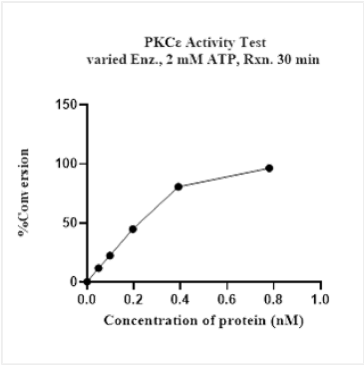
Store at -70°C. This product is stable at $\leq -70^{\circ}\text{C}$ for up to 1 year from the date of receipt. For optimal storage, aliquot into smaller quantities after centrifugation and store at recommended temperature.

Aliquots below 10 µL are not advisable. Product must not be stored in diluted solutions. Avoid repeated freeze-thaw cycles.

Validation Data



Recombinant Human PKC epsilon/PRKCE Kinase was determined by SDS-PAGE under reducing (R) and non-reducing (NR) conditions.



The activity of PRKCE is based on the MSA technology, and the content and ratio of the substrate and the product are directly separated and detected in real time and dynamically by the different migration rates of the substrate and the product after the enzymatic reaction.