

Recombinant Human Proto-oncogene tyrosine-protein kinase Src/SRC Protein

Catalog No.: RP03356LQ **Recombinant**

Sequence Information

Species	Gene ID	Swiss Prot
Human	6714	P12931

Tags

N-His-Flag

Synonyms

SRC; SRC1; p60-Src; Proto-oncogene c-Src; Proto-oncogene tyrosine-protein kinase Src

Product Information

Source	Purification
Baculovirus-Insect Cells	> 90% by SDS-PAGE and HPLC

Calculated MW	Observed MW
61.6 kDa	50-60 kDa

Endotoxin

< 1.0 EU/μg of the protein by LAL method

Formulation

Supplied as a 0.22 μm filtered solution in 50 mM HEPES, 150 mM NaCl, 1 mM ATP, 5 mM MgCl₂ (pH 7.5). Contact us for customized product form or formulation.

Reconstitution

Please use running water to thaw it quickly.

Background

Proto-oncogene tyrosine-protein kinase Src, also known as c-Src, is a non-receptor tyrosine kinase protein that in humans is encoded by the SRC gene. It includes an SH2 domain, an SH3 domain and a tyrosine kinase domain. When src is activated, it promotes survival, angiogenesis, proliferation and invasion pathways. It also regulates angiogenic factors and vascular permeability after focal cerebral ischemia-reperfusion, and regulates matrix metalloproteinase-9 activity after intracerebral hemorrhage.

Basic Information

Description

Recombinant Human Proto-oncogene tyrosine-protein kinase Src/SRC Protein is produced by Baculovirus-Insect Cells expression system. The target protein is expressed with sequence (Gly2-Leu536) of Human SRC (Accession #P12931) fused with a N-His-Flag tag.

Bio-Activity

The activity of SRC is based on the MSA technology, and the content and ratio of the substrate and the product are directly separated and detected in real time and dynamically by the different migration rates of the substrate and the product after the enzymatic reaction.

Storage

Store at -70°C. This product is stable at ≤ -70°C for up to 1 year from the date of receipt. For optimal storage, aliquot into smaller quantities after centrifugation and store at recommended temperature.

Aliquots below 10 μL are not advisable. Product must not be stored in diluted solutions. Avoid repeated freeze-thaw cycles.

Avoid repeated freeze/thaw cycles.

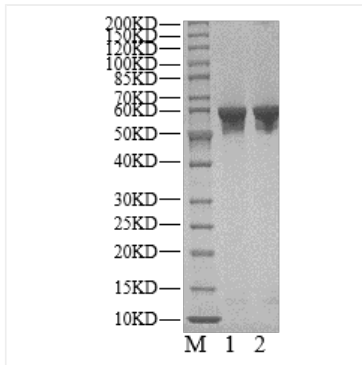
Contact

☎ | 400-999-6126

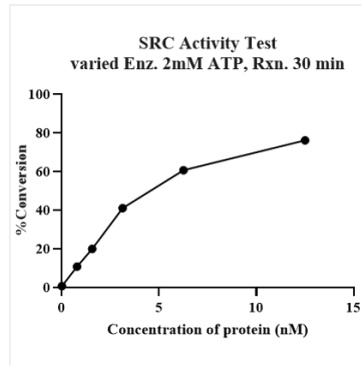
✉ | cn.market@abclonal.com.cn

🌐 | www.abclonal.com.cn

Validation Data



Recombinant Human Proto-oncogene tyrosine-protein kinase Src/SRC Protein was resolved with SDS-PAGE under reducing (Lane 1) and non-reducing (Lane 2) conditions.



The activity of SRC is based on the MSA technology, and the content and ratio of the substrate and the product are directly separated and detected in real time and dynamically by the different migration rates of the substrate and the product after the enzymatic reaction.