

Recombinant Human SGK3/SGKL Protein

Catalog No.: RP03358LQ **Recombinant**

Sequence Information

Species	Gene ID	Swiss Prot
Human	23678	Q96BR1

Tags

N-GST

Synonyms

SGK3; CISK; SGKL; Serum/glucocorticoid-regulated kinase 3; Serine/threonine-protein kinase Sgk3

Product Information

Source	Purification
Baculovirus-Insect Cells	> 90% by SDS-PAGE and HPLC

Calculated MW	Observed MW
83.6 kDa	70-85 kDa

Endotoxin

< 1.0 EU/μg of the protein by LAL method

Formulation

Supplied as a 0.22 μm filtered solution in 50 mM Tris-HCl, 150 mM NaCl, 5% glycerol. (pH 7.5). Contact us for customized product form or formulation.

Reconstitution

Please use running water to thaw it quickly.

Contact

 | 400-999-6126

 | cn.market@abclonal.com.cn

 | www.abclonal.com.cn

Background

Serine/threonine-protein kinase Sgk3 (SGK3) is a member of the serine/threonine protein kinase family. The protein phosphorylates several target proteins and has a role in neutral amino acid transport and activation of potassium and chloride channels. And SGK3 has been shown to interact with GSK3B.

Basic Information

Description

Recombinant Human SGK3/SGKL Protein is produced by Baculovirus-Insect Cells expression system. The target protein is expressed with sequence (Gln2-Leu496) of Human SGK3 (Accession #Q96BR1) fused with a N-GST tag.

Bio-Activity

The activity of SGK3 is based on the MSA technology, and the content and ratio of the substrate and the product are directly separated and detected in real time and dynamically by the different migration rates of the substrate and the product after the enzymatic reaction.

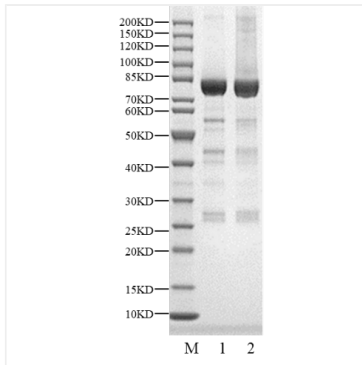
Storage

Store at -70°C. This product is stable at ≤ -70°C for up to 1 year from the date of receipt. For optimal storage, aliquot into smaller quantities after centrifugation and store at recommended temperature.

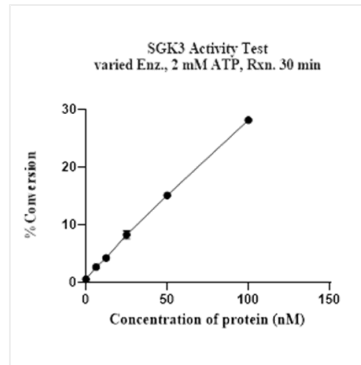
Aliquots below 10 μL are not advisable. Product must not be stored in diluted solutions. Avoid repeated freeze-thaw cycles.

Avoid repeated freeze/thaw cycles.

Validation Data



Recombinant Human SGK3/SGKL Protein was resolved with SDS-PAGE under reducing (Lane 1) and non-reducing (Lane 2) conditions.



The activity of SGK3 is based on the MSA technology, and the content and ratio of the substrate and the product are directly separated and detected in real time and dynamically by the different migration rates of the substrate and the product after the enzymatic reaction.