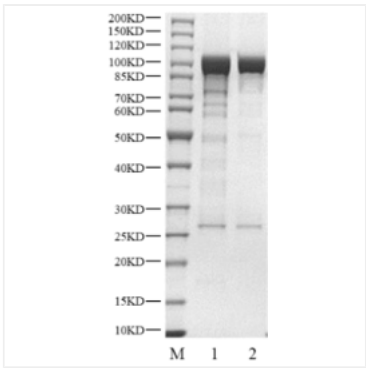
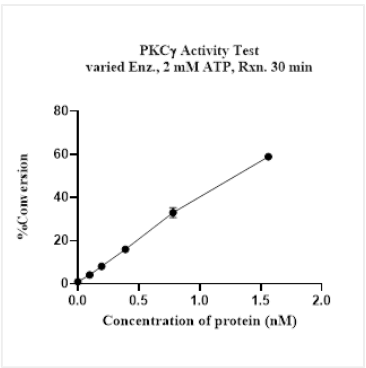


* □□□□□□□□□□□□□□□□

Validation Data



Recombinant Human PKC gamma/PRKCG Kinase was resolved with SDS-PAGE under reducing (Lane 1) and non-reducing (Lane 2) conditions.



The activity of PRKCG is based on the MSA technology, and the content and ratio of the substrate and the product are directly separated and detected in real time and dynamically by the different migration rates of the substrate and the product after the enzymatic reaction.