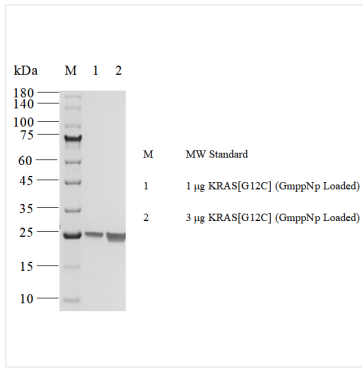
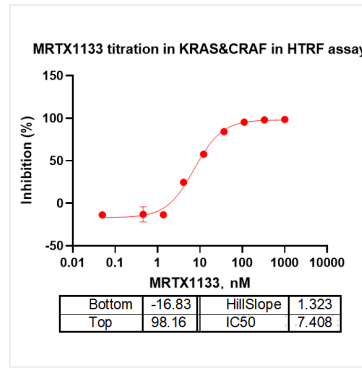


Validation Data



Recombinant Human GTPase Ras/KRAS (G12C) (GMPPNP load) Protein was determined by SDS-PAGE under reducing conditions with Coomassie Blue.



The KRAS[G12C](GmppNp loaded) activity was quantified using a HTRF-based assay. The reaction was performed by incubating the KRAS[G12C](GmppNp loaded) protein, GTP and substrate, the donor and receptor at 25°C for 60 min, then measuring the 665nm/620nm fluorescence signal ratio on BMG.