

# Recombinant Human PA28gamma/PSME3 protein

Catalog No.: RP10020LQ **Recombinant**

## Sequence Information

Species	Gene ID	Swiss Prot
Human	10197	P61289

**Tags**  
His Tag

### Synonyms

PSME3; HEL-S-283; Ki; PA28-gamma;  
PA28G; PA28gamma; REG-GAMMA;  
proteasome activator subunit 3;HEL-  
S-283;Ki;PA28-  
gamma;PA28G;PA28gamma;REG-  
GAMMA

## Product Information

Source	Purification
<i>E. coli</i>	~95% by SDS-PAGE

### Endotoxin

### Formulation

20 mM Tris, 150 mM NaCl, 2 mM βME,  
10% Glycerol

### Reconstitution

## Background

PA28 (also called the 11S regulatory complex) is another activator of the 20S proteasome, which assembles on either one or both ends of the 20S proteasome in an ATP-independent manner. PA28 can greatly enhance the peptidase activities of the 20S proteasome, but not for degradation of ubiquitinated proteins. The PA28 activator is a complex of two alternating homologous subunits, PA28α and PA28β, which assembles as a hexameric ring with an α3β3 stoichiometry. PA28α and PA28β are induced by interferon. Functionally, PA28 enhances the generation of class I peptides for antigen presentation. The third subunit, PA28γ, was recently identified in the nucleus. Recombinant PA28α and PA28β form a heptameric ring; whereas PA28γ forms a hexameric ring. All of them can stimulate the peptidase activities of the 20S proteasome.

## Basic Information

### Description

### Bio-Activity

### Storage

This product is stable at ≤ -70°C for up to 6 months from the date of receipt. For optimal storage, aliquot into smaller quantities after centrifugation and store at recommended temperature. Avoid repeated freeze/thaw cycles.

## Contact

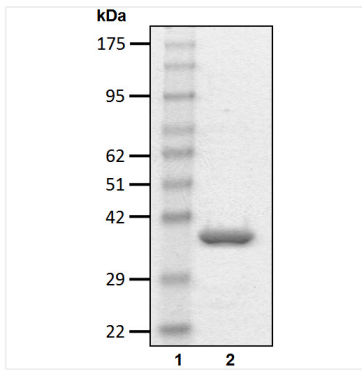
☎ | 400-999-6126

✉ | [cn.market@abclonal.com.cn](mailto:cn.market@abclonal.com.cn)

🌐 | [www.abclonal.com.cn](http://www.abclonal.com.cn)

## Validation Data

---



Recombinant human PA28gamma/PSME3 protein was determined by SDS-PAGE with Coomassie Blue.