

Recombinant Human Ubiquitin-conjugating enzyme E2 B/UBE2B protein

Catalog No.: RP10035LQ **Recombinant**

Sequence Information

Species	Gene ID	Swiss Prot
Human	7320	P63146

Tags
His Tag

Synonyms
UBE2B; E2-17kDa; HHR6B; HR6B;
RAD6B; UBC2; ubiquitin-conjugating
enzyme E2
B;E2-17kDa;HHR6B;HR6B;RAD6B;UBC2

Product Information

Source	Purification
<i>E. coli</i>	~95% by SDS-PAGE

Endotoxin

Formulation
20 mM Tris, 150 mM NaCl, 2 mM β ME,
10% Glycerol

Reconstitution

Background

Ube2B is an E2 enzyme, which is part of the E1, E2, and E3 cascade responsible for ubiquitination of protein substrates. It shares 95% amino acid sequence identity with Ube2A. One function of Ube2B involves the formation of Ube2B/ Rad18 (an E3 enzyme) complex to monoubiquitinate proliferating cell nuclear antigen (PCNA) thus activating it to repair DNA damage. The Ube2B/Rad18 complex is recruited to the replication fork of the damaged DNA to start the post-replication repair.

Basic Information

Description

Bio-Activity

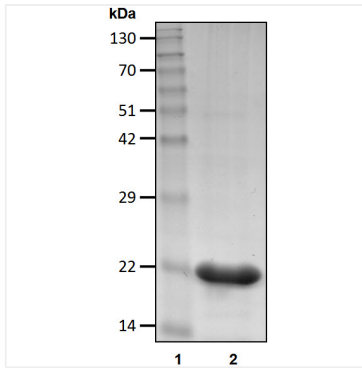
Storage

Store at -70°C. This product is stable at $\leq -70^\circ\text{C}$ for up to 1 year from the date of receipt. For optimal storage, aliquot into smaller quantities after centrifugation and store at recommended temperature. Avoid repeated freeze-thaw cycles. Avoid repeated freeze/thaw cycles.

Contact

		400-999-6126
		cn.market@abclonal.com.cn
		www.abclonal.com.cn

Validation Data



Recombinant human Ubiquitin-conjugating enzyme E2 B/UBE2B protein was determined by SDS-PAGE with Coomassie Blue.