

Recombinant Human UBE2C protein

Catalog No.: RP10036LQ **Recombinant**

Sequence Information

Species	Gene ID	Swiss Prot
Human	11065	O00762

Tags

His Tag

Synonyms

UBCH10; dj447F3.2;UBE2C; UBCH10;
ubiquitin-conjugating enzyme E2
C;dj447F3.2

Product Information

Source	Purification
<i>E. coli</i>	~95% by SDS-PAGE

Endotoxin

Formulation

20 mM Tris, 150 mM NaCl, 2 mM β ME,
10% Glycerol

Reconstitution

Background

UbcH10 (Ubc2C) is an E2 enzyme, which is part of the E1, E2, and E3 cascade responsible for ubiquitination of protein substrates. It plays a major role in the mitosis in cell cycle by binding to the anaphase-promoting complex/cyclosome (APC/C), which causes autoubiquitination and degradation of UbcH10. This in turn stabilizes cyclin A, promoting cells enter into S phase. UbcH10 also promotes ubiquitination of many substrates of APC/C.

Basic Information

Description

Recombinant Human UBE2C protein

Bio-Activity

Storage

This product is stable at $\leq -70^{\circ}\text{C}$ for up to 6 months from the date of receipt. For optimal storage, aliquot into smaller quantities after centrifugation and store at recommended temperature. Avoid repeated freeze/thaw cycles.

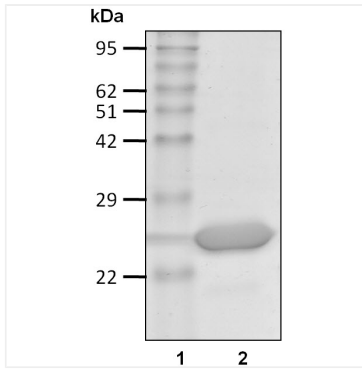
Contact

☎ | 400-999-6126

✉ | cn.market@abclonal.com.cn

🌐 | www.abclonal.com.cn

Validation Data



Recombinant human Ubiquitin-conjugating enzyme E2 C/UBE2C protein was determined by SDS-PAGE with Coomassie Blue.