

Recombinant Human Ubiquitin-conjugating enzyme E2 E1/UBE2E1 protein

Catalog No.: RP10041LQ **Recombinant**

Sequence Information

Species	Gene ID	Swiss Prot
Human	7324	P51965

Tags
His Tag

Synonyms
UBE2E1;UBCH6

Product Information

Source	Purification
<i>E. coli</i>	~90% by SDS-PAGE

Endotoxin

Formulation
20 mM Tris, 150 mM NaCl, 2 mM β ME,
10% Glycerol

Reconstitution

Background

Ube2E1 is an E2 enzyme, which is part of the E1, E2, and E3 cascade responsible for ubiquitination of protein substrates. Ube2E1 was found to locate in the nucleus. It, along with Ube2D1, is known to complex with the E3 ligase Ro52 to ubiquitinate interferon regulatory transcription factors IRF3 and IRF8. Ube2E1 can also complex with a Ub ligase called RING105 to ubiquitinate a tumor suppressor known as tumor - suppressing subchromosomal transferable fragment cDNA (TSSC5).

Basic Information

Description

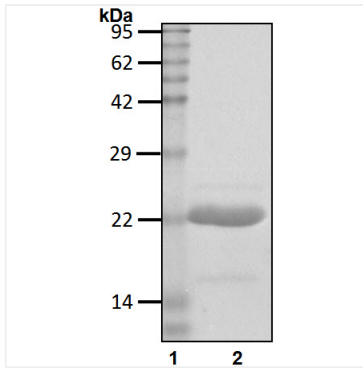
Bio-Activity

Storage
Store at -70°C. This product is stable at \leq -70°C for up to 1 year from the date of receipt. For optimal storage, aliquot into smaller quantities after centrifugation and store at recommended temperature. Avoid repeated freeze-thaw cycles. Avoid repeated freeze/thaw cycles.

Contact

		400-999-6126
		cn.market@abclonal.com.cn
		www.abclonal.com.cn

Validation Data



Recombinant human Ubiquitin-conjugating enzyme E2 E1/UBE2E1 protein was determined by SDS-PAGE with Coomassie Blue.